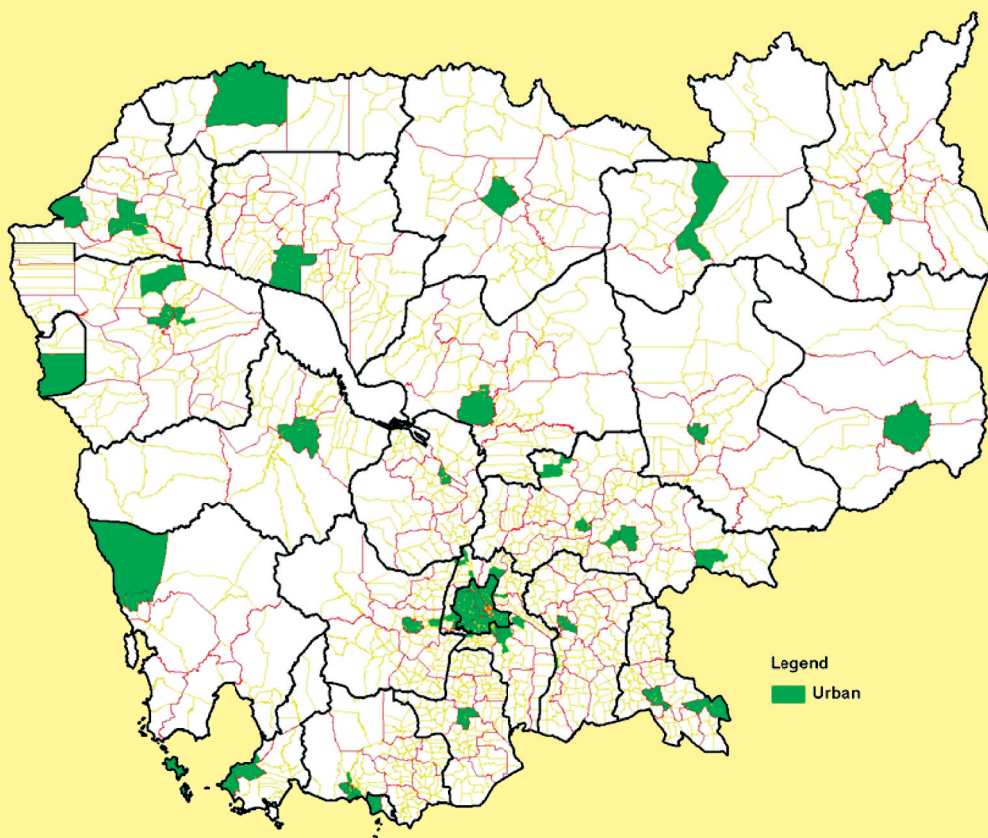




## KINGDOM OF CAMBODIA

# Reclassification of Urban Areas in Cambodia, 2011



**National Institute of Statistics, Ministry of Planning**

*Sponsored by:*

**United Nations Population Fund**

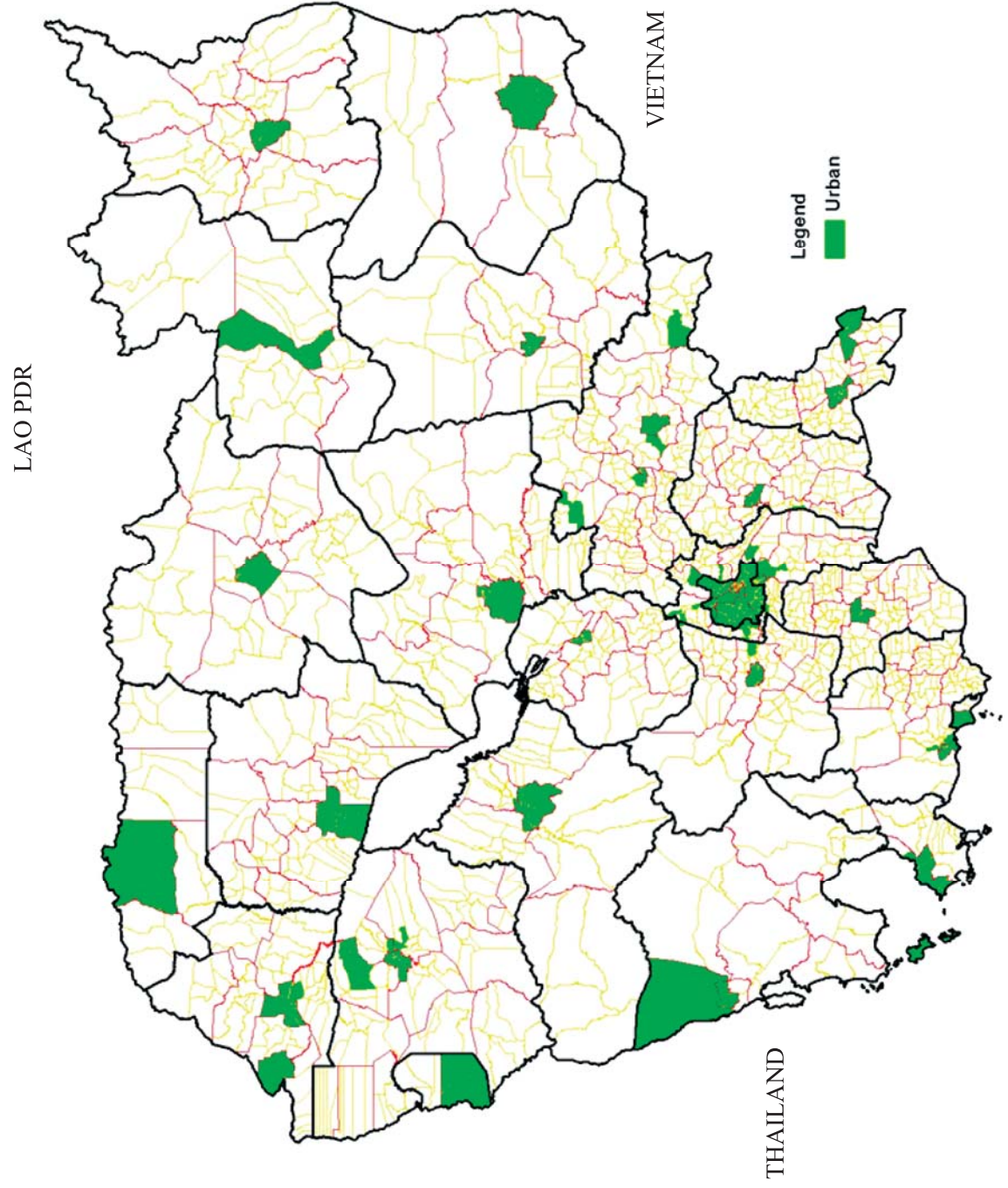
Phnom Penh, Cambodia

February 2012





**Map 1. Urban Areas in Cambodia after Re-classification, 2011**





# Contents

|   | Page No. |
|---|----------|
| Foreword by Senior Minister, Minister of Planning   | v        |
| Preface by Director General, NIS  | vii      |
| Personnel Associated with this Report   | ix       |
| Abbreviations and Acronyms  | x        |
| <br>  |          |
| Reclassification of Urban Areas in Cambodia, 2011   | 1        |
| 1. Introduction   | 1        |
| 2. Cambodian Situation  | 1        |
| 3. Reclassification of Urban Areas in 2004  | 2        |
| 4. Urban Areas declared by the Royal Sub-Decree (2009)  | 3        |
| 5. The purpose of the current study   | 3        |
| 6. Consultative Meetings and Workshops  | 5        |
| 7. Results  | 6        |
| 7.1 Total urban population  | 6        |
| 7.2 Urban population by province  | 6        |
| 8. Differential Characteristics of Urban and Rural Areas  | 7        |
| <br>  |          |
| Map 1. Urban Areas in Cambodia after Reclassification,2011  | i        |
| <br>  |          |
| <b>Tables</b>   |          |
| Table 1. Provisional List of Towns (Urban Communes and Sangkats) in Cambodia based on 2011 Criteria (RC 2011)                                     | 9        |
| Table 2. Provisional List of All Towns (Urban Communes and Sangkats) in Cambodia according to RC 2011 SDC   | 17       |
| Table 3. Changes in the Urban Population Estimates due to Reclassifications- Cambodia and Provinces   | 29       |
| Table 4. Number of Communes/ Sangkats made urban in the 2011 Reclassification (RC 2011 SDC), by Category-Cambodia and Provinces                   | 31       |
| Table 5. Differences between Urban and Rural areas in various Indicators derived from the 2008 Census on the basis of RC 2004 SDC and RC 2011 SDC | 31       |
| <br>  |          |
| <b>Figures</b>  |          |
| Figure 1: Urban Population of Cambodia in 2008 Census and 2011 Reclassification (RC 2004 SDC and RC 2011 SDC)                                     | 6        |
| Figure 2: Percentage of Urban Population of Cambodia in 2008 Census and 2011 Reclassification (RC 2004 SDC and RC 2011 SDC)                       | 7        |
| Figure 3: Urban Population in Provinces as at 2008 Census (RC 2004 SDC) and after Reclassification in 2011 (RC 2011 SDC)                          | 8        |
| Figure 4: Percentage of Urban Population in Provinces as at 2008 Census (RC 2004 SDC) and after Reclassification in 2011 (RC 2011 SDC)            | 8        |



## FOREWORD

**By HE Senior Minister, Minister of Planning**

The definition of an urban area varies from country to country. In the absence of an objective classification of urban areas in Cambodia, a re-classification of urban and rural parts was made by the National Institute of Statistics (NIS) in 2004. This was done on the basis of a set of criteria derived after an in-depth study with expert guidance. This exercise was consistent with Cambodian conditions and useful for planning.


The list of urban areas produced by the study together with the list of 27 Krongs and Cities declared in the Royal Sub-Decree No.18, ANKR BK dated 12 January 2009 served as the urban frame for the 2008 Census.

After the completion of the Population Census of 2008 a re-study was taken up by the NIS to further improve and rationalise the criteria used to determine whether a commune/sangkat not covered by the 27 Krongs/cities was qualified to be in the urban list.

This second study has been made possible by UNFPA funding. The availability of the data from the 1998 and 2008 Population Censuses has provided the opportunity to utilize them to determine whether localities should be considered as urban or rural.

This report contains the results of this in-depth re-study. The re-classification is mainly intended for statistical and planning purposes and will not affect the existing administrative arrangements. In the future it is necessary to examine each village to know whether it qualifies to become an urban area under a set of criteria including amenities and facilities.

I thank the UNFPA for funding the two Population Censuses in 1998 and 2008 and for the follow-up activities. I thank Mr.Soktha Yi, PD Program Officer and Mr. Chap Ratana, Project Manager of UNFPA for their close coordination with NIS in this project. My thanks are due to the staffs of the NIS, H.E. Mrs. Hang Lina, Mr. Meng Kimhor and Mr. Yem Suong, who were associated with this study,

It is my fervent hope that this report would be welcomed by the various Ministries and Departments of the Royal Government of Cambodia as well as donors, international agencies, NGOs and others interested in urbanization trends in Cambodia. 

Ministry of Planning  
Phnom Penh  
February, 2012

  
**Chhay Than**  
**Senior Minister**  
**Minister of Planning**





## PREFACE

Before the year 2004, the identification of places as urban or rural in Cambodia was based only on administrative criteria which were not satisfactory for planning for the needs of actual urban populations. There were a number of problems in the previous classification, the main one being that it made decisions at the level of province or district. The previous provincial towns encompassed vast areas of agriculture and wastelands and uninhabited areas including mountainous terrain.

A more refined definition of urban places required designation of urban or rural at a lower administrative level – the commune or, ideally, the village. However, the available data did not permit the classification of villages as urban or rural since the boundaries of these villages were not known exactly for an accurate calculation of their population density. The reclassification of urban areas done at commune level in 2004 provided an objective estimate of the urban population of Cambodia and proved very useful for planning purposes.

The current re- study attempts to make further refinement of the urban criteria and provide better estimates of the urban population. This involved providing recommendations about a classification of urban places based on a consistent set of criteria using the latest census data and including Krong/Cities declared in the Royal Sub-Decree No. 18, ANKR.BK, dated 12 January, 2009. The availability of data from the 1998 and 2008 Population Censuses provided an opportunity in 2011 to utilize them for making a fresh reclassification of urban areas in Cambodia.

The details of the new criteria chosen to declare communes as urban are discussed in the report. Communes/Sangkats qualified to become towns based on the fresh criteria together with the Sub-Decree cities form the urban portion of the country.

We are grateful to HE Chhay Than, Senior Minister, Minister of Planning for his encouragement throughout this study. We take this opportunity to thank H.E Mrs. Hang Lina, Mr. Meng Kimhor, Mr. Yem Suong, Mr. Chap Ratana and other officers and staff of the project who have put in hard work in the reclassification of urban areas in 2011. *ds*

Phnom Penh, Cambodia  
February, 2012



**San Sy Than**  
**Director General,**  
**National Institute of Statistics**



# RECLASSIFICATION OF URBAN AREAS IN CAMBODIA, 2011

## PERSONNEL ASSOCIATED WITH THIS REPORT

- National Institute of Statistics** : HE San Sy Than  
Director General, NIS, Ministry of Planning
- Mrs. Hang Lina  
Deputy Director General, NIS, Ministry of Planning
- Mr. Meng Kimhor  
Deputy Director General, NIS, Ministry of Planning
- Mr. Yem Suong  
Advisor to Ministry of Planning
- Mr. Sin Sereivuth, Deputy Director,  
Demographic Statistics Census and Survey Department
- Mr. Chea Kung, Vice Bureau Chief,  
Demographic Statistics Census and Survey Department
- UNFPA : Mr. Soktha Yi, PD Programme Officer  
Mr. Chap Ratana, Project Manager

## ABBREVIATIONS AND ACRONYMS

|             |   |
|-------------|---|
| MOP         | Ministry of Planning  |
| NIS         | National Institute of Statistics                                  |
| UNFPA       | United Nations Population Fund                                    |
| UN-HABITAT  | United Nations Human Settlement Program                           |
| UNTAC       | United Nations Transitory Authority of Cambodia                   |
| RC 2004     | Reclassification Criteria of 2004 Study                           |
| RC 2011     | Reclassification Criteria of 2011 Study                           |
| RC 2004 SDC | All Towns Based on RC 2004 and Sub-Decree Cities                  |
| RC 2011 SDC | All Towns Based on RC 2011 and Sub-Decree Cities                  |
| SDC         | Cities according to Royal Sub-Decree No. 18 dated 12 January 2009 |

# RECLASSIFICATION OF URBAN AREAS IN CAMBODIA 2011

## 1. Introduction

Identification of places as urban and rural is of vital importance for planning purposes. Location of industry, roads and urban facilities needs to be based on accurate knowledge of the extent and growth of urban areas. The facilities needed in urban areas are different from those needed in rural areas. For example, drainage and rubbish disposal can be carried out more cheaply and simply in rural areas, but if the same methods are used in towns, many problems will result. Also, urban areas tend to grow more rapidly than rural areas, because of migration into these areas. Therefore forward planning is needed to ensure that facilities in urban areas will be adequate for the growing needs and for ensuring good environment, sanitation and hygiene for the urban dwellers.

Generally substantial differences are apparent between urban and rural populations in terms of variables such as age at marriage, level of infant and maternal mortality, literacy, school attendance, level of educational attainment of the adult population and sources of lighting and water. In planning for the physical and social development needs of the population, then, it is important to have as accurate a designation as possible of the urban and rural areas in the country.

There is as yet no uniform international approach to classifying urban and rural places. Consequently the definition varies from country to country. The 2003 revised edition of "World Urbanization Prospects", prepared by the Population Division of the United Nations, lists the definitions adopted by the various countries, as found suitable by them.

## 2. Cambodian Situation

### *Urban-rural Classification at the time of 1998 Census of Cambodia*

The situation of classification of urban areas in Cambodia at the time of the 1998 Census was as follows:

A need was felt for designating urban areas according to a definition that was consistent with Cambodian conditions, and optimum for planning purposes. There was no functional classification of urban areas. The designation of places as urban or rural was based only on administrative criteria, which were unsatisfactory for planning for the needs of actual urban populations. The following areas were treated as urban:

- (i) All province towns (which were whole districts)
- (ii) Four districts of Phnom Penh municipality (the other three were considered as rural)
- (iii) The entire provinces of Sihanoukville, Kep and Pailin, which were called Krongs or municipalities.

There were a number of problems with this designation:

- Districts were quite large in area, and a number of communes in the districts in which the province towns were located are very rural in character. By considering these rural communes as urban, the populations of most provincial towns were exaggerated.
- In some cases, an adjoining commune or communes in another district were part of the built-up area of a provincial town, but were not included because of the restriction of the town population to the district in which it is located.
- Parts of Phnom Penh municipality were rural, but also some areas of Kandal province immediately adjoining the Phnom Penh municipality were built-up areas, which for planning purposes should be included as part of the Phnom Penh.
- Large areas of the provinces of Sihanoukville, Kep and Pailin were rural, and by considering the entire provinces as urban, their urban population was greatly exaggerated.
- A number of small towns that were not province capitals were missed by the previous urban definitions, and included in the rural population although they have distinct urban characteristics and in some cases their populations exceeded 20,000.

The key problem with this classification of urban places (adopted from the UNTAC period) was that it made decisions at the level of province or district. The provincial towns mentioned at (i) and the provinces mentioned, at (ii) encompassed vast areas of agriculture and wastelands and uninhabited areas including mountainous terrain. Similarly, the necessity of declaring each of the districts within Phnom Penh municipality as either 100% urban or 100% rural resulted in a misleading impression about the nature of the built-up area of the city.

### **3. Reclassification of Urban Areas in 2004**

Recognising the need for a classification based on a consistent set of criteria at commune level the work of reclassification of urban areas utilizing the data from the 1998 Census was commenced in October 2001 by the National Institute of Statistics (NIS) with expert guidance. The results were published by NIS in the report "Reclassification of Urban Areas in Cambodia". (2004). In this study, three appropriate criteria were adopted for classifying a commune as urban.

The designation of localities as urban or rural should ideally have been done at village level with a view to combining urban villages to form towns. However, the available data did not permit the classification of villages as urban or rural. The main constraint in this connection was the absence of fixed boundaries of the villages that made the calculation of their population density next to impossible. The 2004 exercise therefore focused on the commune which contained on an average eight villages. Although this was not entirely satisfactory the focus on the commune, rather than the province and district level represented a considerable improvement of the then existing urban classifications.

The three criteria adopted in the Reclassification of 2004 (RC 2004) for classifying a commune as an urban area were: population density, percentage of males employed in agriculture, and a minimum population size. The first of these – population density – was useful in indicating whether there was a sufficient concentration of population to be consistent with urban status. The second – percentage of male employment in agriculture – was important in distinguishing between densely populated agricultural areas and densely populated areas where the focus of economic activity was non-agricultural – a typical distinguishing feature of urban areas. The third – a minimum population size – was typically

used for defining urban areas, in order to avoid the designation of small grouping of households as urban areas.

In 2004 when this attempt was made to reclassify urban areas, Cambodia had 183 districts, 1,609 communes and 13,406 villages. Due to subsequent reorganization and formation of new settlements there were in 2011, 194 districts/Krongs/Khands, 1633 communes/sangkats and 14,172 villages.

The cut-off point arrived at in the Reclassification of 2004 for each of these criteria was:

- Population density exceeding 200 per square kilometer
- Percentage of male employment in agriculture below 50 per cent
- Total population of the commune exceeding 2,000

Based on the above criteria, urban areas were designated in RC 2004. The remaining areas were treated as rural. Application of RC 2004 increased the estimated urban population of Cambodia in 1998 from 1,795,575 to 2,025,743. This resulted in a rise of the urban percentage of the population from 15.7 per cent to 17.7 per cent. This urban-rural frame was utilized in conducting the 2008 Census.

#### **4. Urban Areas declared by the Royal Sub-Decree (2009)**

After the field operations of the 2008 Census concluded the Royal Sub-decree No.18 ANKR.BK dated 12 January 2009 had to be implemented. The Sub-Decree declared 26 places as Krongs or cities in 23 provinces and Phnom Penh with 9 Khands and 96 Sangkats as one Municipality.

It is customary to include statutorily declared urban areas in the Urban list whether these areas satisfy the evolved urban criteria or not. Consequently the urban-rural tabulation for the 2008 Census had to be revised on the following basis: Urban areas were these Krongs/Cities (which may be called for easy reference as Sub-Decree Cities or SDCs), plus those communes not included in the SDCs but which satisfied the three 2004 urban criteria (RC 2004). There were, however, a few communes/sangkats recommended to be included as towns by provincial directors based on local knowledge. This procedure may be called RC2004SDC to facilitate easy reference. The 2008 Census urban population of Cambodia is the same as urban population of Cambodia according to RC 2004SDC

#### **5. The purpose of the current study**

The current study aimed to further revise the reclassification of urban areas in Cambodia made in 2004, based on a consistent set of criteria utilizing the 2008 Census results. As village boundaries were yet to be firmed up in Cambodia the question of designating localities as urban or rural with the focus on the village did not arise. Following the precedence set up by RC 2004 the present exercise continued to focus on the commune, which on average contained nine villages in 2011.

The availability of fresh data at commune level from the 2008 Census presented an opportunity to re-classify the urban areas by studying afresh the demographic characteristics of all the communes in the country barring the communes covered by Krongs/cities declared in the Royal Sub-Decree. For the re-classification in 2011 which may be referred to as RC 2011, the NIS staff prepared data sheets using a range of cut-off points for the different criteria. Careful study of these data sheets revealed that it made little difference if minimum

size of 1,000 or 2,000 was used for the population of communes, because a frequency distribution of communes by population showed that relatively few communes (4.4 percent) had populations below 2,000 in 2011.

As for population density, the cut-off points considered were 100 and 200 per square kilometer, though the initial preference was for 200 per sq. km, because a figure less than this seemed lower than expected for urban population densities. It turned out to make relatively little difference whether a population density figure of 100 or 200 per square kilometer was used, as most communes in the densely settled central area of Cambodia, whether urban or rural, had densities well above 200, and some of those urban areas that did not, largely in isolated provinces, had densities well below 100. It was therefore decided to maintain the cut-offs of 2,000 and 200 for population and density respectively.

The consultants held detailed discussions with the staff about the appropriate cut-off levels for the other urban indicator, namely, proportion of population engaged in agriculture. In RC2004 percentage of male employment only was adopted for this criterion due to the following reasoning: "In the Cambodian context, where most women are recorded as in the labour force, a case might be made for focusing on the proportion of the workforce as a whole, rather than the male workforce only. However, because in Cambodia as well as in most countries, the range of male economic activities is wider than female, the restriction of the indicator to male workers is justified as a more sensitive indicator of the importance of non-agricultural activities in the particular locality".

In 2011, however, the consensus within the NIS was to consider proportion of workforce as a whole (both males and females) since female economic activities were also well diversified in the present day context. Inclusion of female workforce in the calculation of percentage of employment in agriculture for this criterion was also in keeping with the Royal Government's policy of gender mainstreaming.

The cut-off point for urban that emerged from the consultations in the current study for each of these criteria is as follows:

- Population density exceeding 200 per square kilometer
- Percentage of persons ( both sexes) employed in agriculture below 50 per cent
- Total population of the commune exceeding 2,000

These three criteria of which the second one is new may be called RC 2011.

Although the criteria for urban designation appeared to be sound in Cambodian conditions, it was decided to conduct further field visits to examine conditions on the ground and to check some additional borderline cases. Two teams of experienced NIS staff did the field check. The first team with Mr. Meng Kimhor and Mr. Yem Suong visited the provinces of Kampong Speu, Preah Sihanouk, Koh Kong, Kandal, Phnom Penh, Kampot, Svay Rieng and Takeo. The second team with H.E Mrs. Hang Lina and staff visited the provinces of: Kampong Thom, Siem Reap, Banteay Meanchey, Battambang and Kampong Cham. These field visits of the two teams revealed that:

- The communes selected as urban according to the agreed criteria did indeed exhibit urban characteristics.
- Certain areas which exhibited urban characteristics in the field did not qualify according to the criteria mainly because of weaknesses of using the commune rather than the village as the unit of analysis
- Province directors had made recommendations, based on local knowledge. In some, but not all such cases examined by the visiting teams, these suggestions were found to be fully justified



In summary the urban areas in Cambodia proposed in the current 2011 study were:

- (1) The 27 Krongs/Cities declared in the Royal Sub-Decree No. 18 ANKR.BK dated 12 January 2008
- (2) All communes not included in these 27 Krongs/Cities but which satisfied the following conditions:
  - (i) Population density exceeding 200 per square kilometer
  - (ii) Percentage of persons (both sexes) employed in agriculture below 50 per cent
  - (iii) Total population of the commune exceeding 2,000
- (3) Communes recommended for inclusion in the urban list by Field Officers/Province Directors in exceptional cases based on local knowledge and field visits.

The above set of three conditions may be referred to hereinafter as RC 2011SDC.

## **6. Consultative Meetings and Workshops**

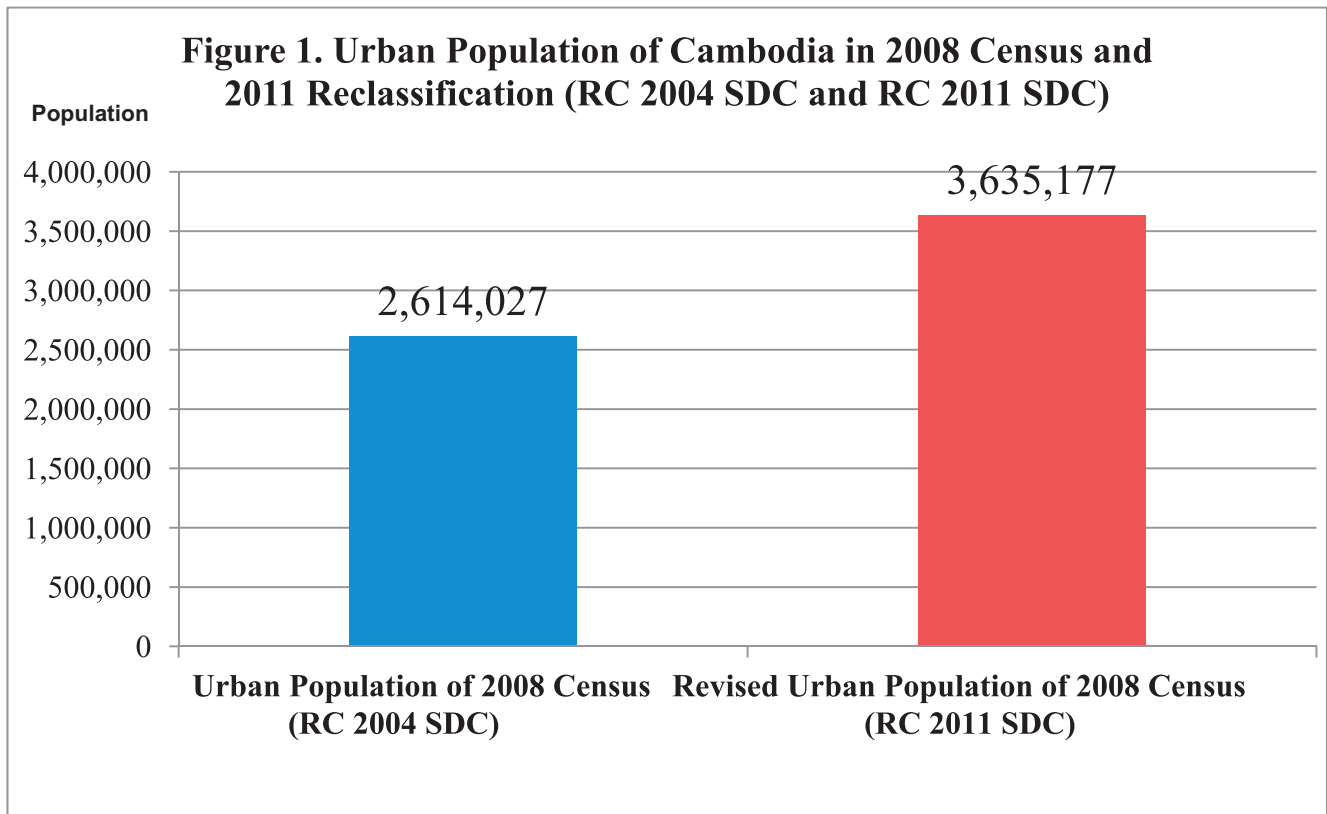
These decisions regarding RC 2011 were arrived at after considerable discussion of the pros and cons of the proposal with the officials and departments concerned in the following meetings/workshops:

- (1) Three meetings held at the NIS on 7 June, 13 June and 15 August 2011 with the participation of representatives of UNFPA, UN-HABITAT, National Institute of Statistics, Ministry of Planning, Department of General Administration of Ministry of Interior, and Department of Planning of Land Management of Ministry of Land Management, Urban Planning and Construction
- (2) A consultative Workshop organized on 07 September in 2011 in Phnom Penh with the participation of Provincial Directors of Planning, representatives of Governor's offices, provincial offices of Land Management Urban Planning and Construction, Ministry of Interior, Ministry of Public Works and Ministry of Rural Development and Environment.

Having settled on the criteria for designation as urban areas, Table 1 (Towns based only on the three revised criteria that is RC2011) and Table 2 (Combined List of Towns based on the three revised criteria and Towns based on the Royal Sub-Decree, that is, RC2011SDC) were prepared

The results of the study, Tables 1 and 2 and the reports on the field visit in provinces were submitted at the consultative workshop for comments. It was found that the local knowledge was valuable in indicating the presence of urban areas that could be missed by a purely statistical approach. In general the province officers agreed with the proposal for reclassification of towns

It was clarified at the workshop that the new classification (RC 2011) was mainly for statistical and planning purposes and would not affect the administrative arrangements. A few suggestions were made at the meeting to make some minor changes in the Table headings/foot notes. A major suggestion from the Planning Director of Kampong Cham province was to include seven communes in the list of urban areas of Kampong Cham province. These communes were Ph'Av (Batheay district), Speu and Svay Teab (Chamkar Leu district), Peam Chi Kang (Kang Meas district), Dar and Memot (Memot district) and Preuek Pou (Srei Santhor district). The participants of the meeting evinced keen interest in the proposed reclassification of urban areas and expressed their appreciation to the rational approach to defining urban area.



## 7. Results

### 7.1 Total urban population

The application of RC 2011 criteria raised the estimated urban population of Cambodia by 1,021,150 from 2,614,027 to 3,635,177 (Table.3) as of 2008. This resulted in raising the estimated urban percentage of the population from 19.5 percent to 27.1 percent. In other words, there was a small rise but not a drastic change in the estimated urban population proportion for the country as a whole due to the change in classification criteria.

### 7.2 Urban population by province

On the other hand, at the province level, there were some striking changes (Table.3) in the estimated urban population as mentioned below:

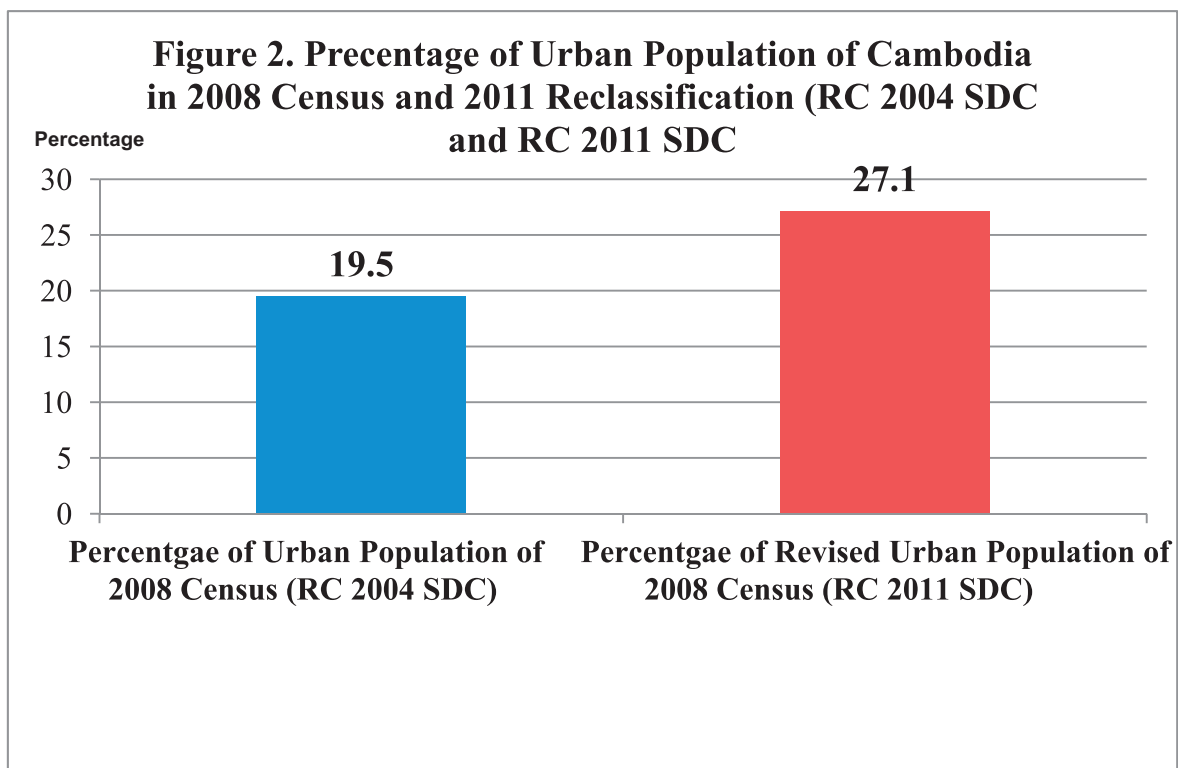
- Large increases (more than 100 per cent) in the urban population of the provinces of Svay Rieng, Takeo, Otdar Meanchey, Kep, Pailin, Mondul Kiri, Pursat, Kampong Cham and Kandal.
- Substantial increases (50 to 99 per cent) in the urban population of the provinces of Preah Vihear, Kampong Thom, Stung Treng, Siem Reap and Ratanak Kiri
- Fairly high Increases (10 to 49 per cent) in the urban population of the provinces of Prey Veng, Koh Kong, Preah Sihanouk, Kampong Speu, Kampot, Banteay Meanchey, Battambang and Phnom Penh.
- No change in the urban proportion in Kampong Chhnang province and marginal increase in Kratie province.

Table.4 gives a summary of the distribution of urban communes of each province and Cambodia by the basis on which they were made urban in 2011.

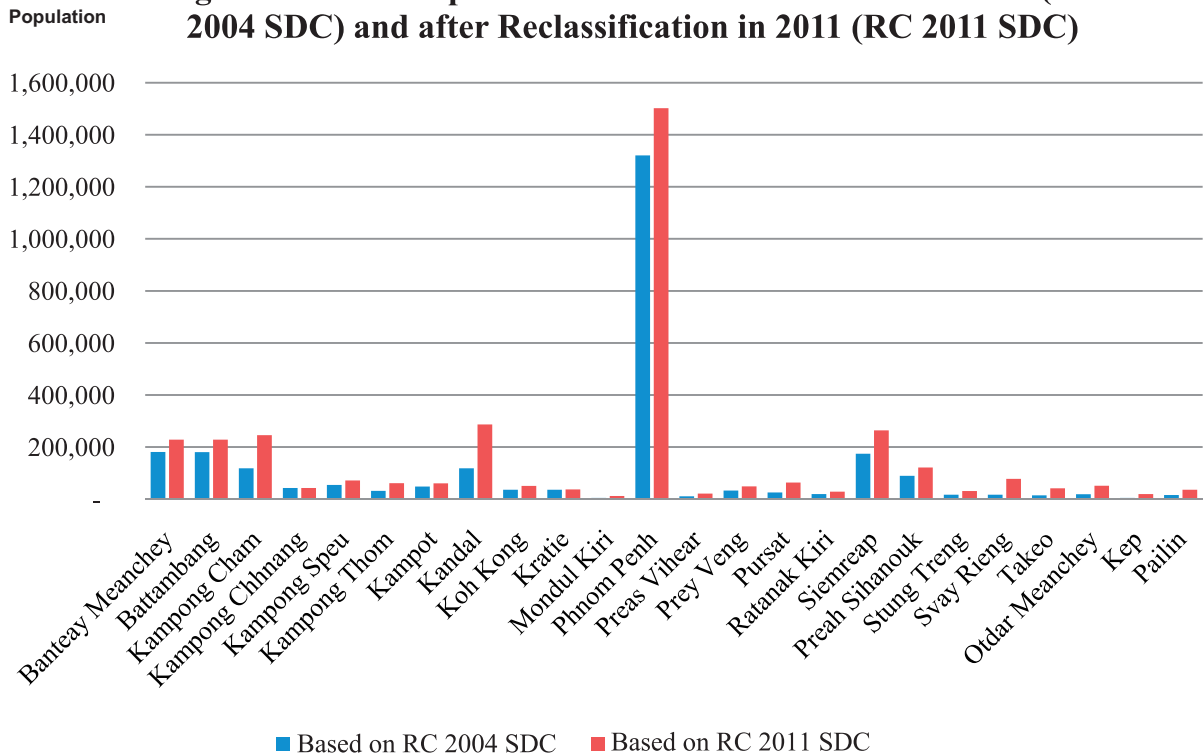
### 8. Differential Characteristics of Urban and Rural Areas

As already mentioned there are clear urban-rural differences in Cambodia in respect of some of the important characteristics as may be seen from Table.5. The differentials are confirmed by both the reclassifications (RC 2004 SDC and RC 2011 SDC).

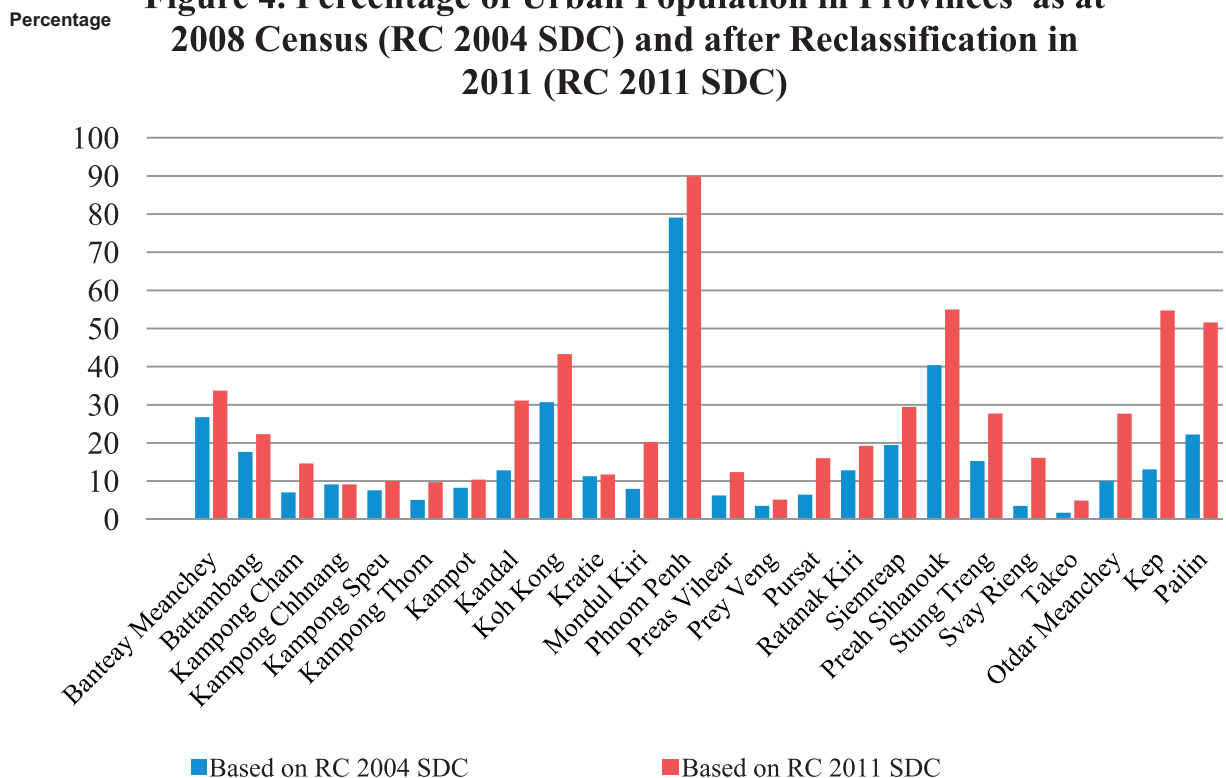
Considering the urban indicators of 2008 Census as revealed by the RC 2004 SDC and RC 2011 SDC, it is observed that there is not much difference in adult literacy rates. Regarding school enrolment (age 6 -14) the 2011 classification has shown a higher proportion whereas in respect of availability of safe drinking water it has shown a lower proportion. On the whole the urban reclassification of 2011 has not changed much the levels of important indicators. The Reclassification Urban Areas of (RC 2011 SDC) could be accepted as a classification based on improved criteria compared to 2004 reclassification.



**Figure 3. Urban Population in Provinces as at 2008 Census (RC 2004 SDC) and after Reclassification in 2011 (RC 2011 SDC)**



**Figure 4. Percentage of Urban Population in Provinces as at 2008 Census (RC 2004 SDC) and after Reclassification in 2011 (RC 2011 SDC)**



**Table 1. Provisional List of Towns (Urban Communes and Sangkats<sup>1</sup>) in Cambodia based on 2011 Criteria (RC 2011)**

| Province         | District             | Code   | Serial No. | Town                        | Name           | Population (2008 Census) |
|------------------|----------------------|--------|------------|-----------------------------|----------------|--------------------------|
| Banteay Meanchey | Mongkol Borei        | 010209 | 1          | Ruessei Kraok*              |                | 22,124                   |
|                  |                      | 010602 | 2          | Kampong Svay*               |                | 26,699                   |
|                  | Krong Serei Saophoan | 010605 | 3          | Ou Ambel*                   |                | 19,332                   |
|                  |                      | 010607 | 4          | Preah Ponlea*               |                | 15,600                   |
|                  |                      | 010608 | 5          | Tuek Thla <sup>£</sup>      |                | 13,600                   |
|                  |                      | 011002 | 6          | Paoy Paet*                  |                | 89,549                   |
|                  |                      |        |            | <b>Province Sub Total</b>   | <b>186,904</b> |                          |
| Battambang       | Krong Bat Dambang    | 020301 | 1          | Tuol Ta Aek*                |                | 15,482                   |
|                  |                      | 020302 | 2          | Preaek Preah Sdach*         |                | 15,024                   |
|                  | Krong Kampong Cham   | 020303 | 3          | Rotanak*                    |                | 16,123                   |
|                  |                      | 020304 | 4          | Chamkar Samraong*           |                | 17,927                   |
|                  | Krong Kampong Speu   | 020305 | 5          | Sla Kaet*                   |                | 7,949                    |
|                  |                      | 020306 | 6          | Kdol Doun Teav*             |                | 8,442                    |
|                  |                      | 020309 | 7          | Ou Char*                    |                | 16,027                   |
|                  |                      | 020310 | 8          | Svay Pao*                   |                | 21,201                   |
|                  |                      | 020502 | 9          | Samraong Knong <sup>£</sup> |                | 11,085                   |
|                  |                      | 020802 | 10         | Norea*                      |                | 5,609                    |
|                  |                      |        |            | <b>Province Sub Total</b>   | <b>134,869</b> |                          |
| Kampong Cham     | Krong Kampong Cham   | 030501 | 1          | Boeng Kok*                  |                | 8,990                    |
|                  |                      | 030502 | 2          | Kampong Cham*               |                | 8,878                    |
|                  | Krong Kampong Speu   | 030503 | 3          | Sambuor Meas*               |                | 13,454                   |
|                  |                      | 030504 | 4          | Veal Vong*                  |                | 15,978                   |
|                  |                      | 030601 | 5          | Ampil <sup>£</sup>          |                | 14,939                   |
|                  |                      | 031701 | 6          | Suong*                      |                | 23,067                   |
|                  |                      |        |            | <b>Province Sub Total</b>   | <b>85,306</b>  |                          |

<sup>1</sup> Note: (1) The Name of commune with (\*) indicates that commune satisfies the criteria of 2004 and 2011

(2) The Name of commune with (°) indicates that commune satisfies the criteria of 2011 only

(3) No commune /sangkat satisfied the 2011 criteria in the Provinces of Mondul kiri, Kep and Pailin

**Table 1 Provisional List of Towns (Urban Communes and Sangkats<sup>1</sup>) in Cambodia based on 2011 Criteria (RC 2011)**

| Provinces       | District                   | Code   | New No. | Town                        | Name | Population    |
|-----------------|----------------------------|--------|---------|-----------------------------|------|---------------|
| Kampong Chhnang | Krong Kampong Chhnang      | 040301 | 1       | Phsar Chhnang*              |      | 20,226        |
|                 |                            | 040302 | 2       | Kampong Chhnang*            |      | 10,236        |
|                 |                            | 040303 | 3       | B'er*                       |      | 6,543         |
|                 |                            | 040304 | 4       | Khsam*                      |      | 6,125         |
|                 |                            |        |         | <b>Province Sub Total</b>   |      | <b>43,130</b> |
| Kampong Speu    | Krong Chbar Mon            | 050203 | 1       | Roka Thum*                  |      | 16,284        |
|                 |                            | 050204 | 2       | Sopoar Tep*                 |      | 6,687         |
|                 |                            | 050511 | 3       | Veang Chas*                 |      | 7,655         |
|                 |                            | 050713 | 4       | Trapeang Kong <sup>£</sup>  |      | 17,356        |
|                 |                            |        |         | <b>Province Sub Total</b>   |      | <b>47,982</b> |
| Kampong Thom    | Krong Stueng Saen          | 060301 | 1       | Damrei Choan Khla*          |      | 6,626         |
|                 |                            | 060302 | 2       | Kampong Thum*               |      | 3,473         |
|                 |                            | 060303 | 3       | Kampong Roteh*              |      | 4,987         |
|                 |                            | 060306 | 4       | Kampong Krabau*             |      | 4,833         |
|                 |                            | 060308 | 5       | Prey Ta Hu*                 |      | 5,681         |
|                 |                            | 060309 | 6       | Achar Leak*                 |      | 6,271         |
|                 |                            |        |         | <b>Province Sub Total</b>   |      | <b>31,871</b> |
| Kampot          | Tuek Chou<br>Krong Kampot  | 070703 | 1       | Kampong Kraeng <sup>£</sup> |      | 6,426         |
|                 |                            | 070801 | 2       | Kampong Kandal*             |      | 8,285         |
|                 |                            | 070802 | 3       | Krang Ampil*                |      | 4,632         |
|                 |                            | 070803 | 4       | Kampong Bay*                |      | 6,376         |
|                 |                            | 070803 | 4       | Kampong Bay*                |      | 6,376         |
|                 |                            | 070804 | 5       | Andoung Khmer*              |      | 10,923        |
|                 |                            |        |         | <b>Province Sub Total</b>   |      | <b>36,642</b> |
| Kandal          | Kandal Stueng<br>Kien Svay | 080102 | 1       | Anlong Romiet*              |      | 4,250         |
|                 |                            | 080103 | 2       | Barku <sup>£</sup>          |      | 5,394         |
|                 |                            | 080206 | 3       | Kokir*                      |      | 18,058        |

**Table 1 Provisional List of Towns (Urban Communes and Sangkats<sup>1</sup>) in Cambodia based on 2011 Criteria (RC 2011)**

| Provinces     | District | Code     | New No.                | Town                           | Name          | Population         |                |        |
|---------------|----------|----------|------------------------|--------------------------------|---------------|--------------------|----------------|--------|
| Khsach Kandal |          | 080305   | 4                      | Kaoh Oknha Tei                 |               | 5,023              |                |        |
|               |          | 080306   | 5                      | Preah Prasab <sup>£</sup>      |               | 8,450              |                |        |
|               |          | 080308   | 6                      | Preaek Luong <sup>£</sup>      |               | 4,922              |                |        |
|               |          | 080703   | 7                      | Preaek Anhchanh <sup>£</sup>   |               | 14,380             |                |        |
|               |          | 080707   | 8                      | Roka Kaong Muoy <sup>£</sup>   |               | 8,518              |                |        |
|               |          | 080801   | 9                      | Baek Chan*                     |               | 15,762             |                |        |
|               |          | 080803   | 10                     | Chhak Chheu Neang <sup>£</sup> |               | 4,824              |                |        |
|               |          | 080804   | 11                     | Damnak Ampil <sup>£</sup>      |               | 6,360              |                |        |
|               |          | 080811   | 12                     | Peuk <sup>£</sup>              |               | 8,504              |                |        |
|               |          | 080903   | 13                     | Kampong Luong <sup>£</sup>     |               | 10,694             |                |        |
|               |          | 080910   | 14                     | Preaek Ta Tean <sup>£</sup>    |               | 8,666              |                |        |
|               |          | 080911   | 15                     | Phsar Daek <sup>£</sup>        |               | 7,619              |                |        |
|               |          | 081008   | 16                     | Preaek Koy <sup>£</sup>        |               | 14,241             |                |        |
|               |          | 081009   | 17                     | Roka Khpos <sup>£</sup>        |               | 12,180             |                |        |
|               |          | 081011   | 18                     | Setbou <sup>£</sup>            |               | 9,181              |                |        |
|               |          | 081013   | 19                     | Svay Rolum <sup>£</sup>        |               | 18,047             |                |        |
|               |          | 081101   | 20                     | Ta Kdol*                       |               | 4,880              |                |        |
|               |          | 081102   | 21                     | Preaek Ruessel*                |               | 10,329             |                |        |
|               |          | 081103   | 22                     | Daeum Mien*                    |               | 15,001             |                |        |
|               |          | 081104   | 23                     | Ta Khmau*                      |               | 28,359             |                |        |
|               |          | 081105   | 24                     | Preaek Hour*                   |               | 8,757              |                |        |
|               |          | 081106   | 25                     | Kampong Samnanh*               |               | 12,815             |                |        |
|               |          |          |                        |                                |               | Province Sub Total | <b>265,214</b> |        |
|               |          | Koh Kong | Krong Khemarak Phoumin | 090401                         | 1             | Smach Mean Chey*   |                | 10,581 |
|               |          |          |                        | 090402                         | 2             | Dang Tong*         |                | 12,796 |
| 090606        | 3        |          |                        | Srae Ambel*                    |               | 12,676             |                |        |
|               |          |          |                        | Province Sub Total             | <b>36,053</b> |                    |                |        |

**Table 1 Provisional List of Towns (Urban Communes and Sangkats<sup>1</sup>) in Cambodia based on 2011 Criteria (RC 2011)**

| Provinces  | District                  | Code   | New No. | Town                  | Name | Population |
|------------|---------------------------|--------|---------|-----------------------|------|------------|
| Kratie     | Chhloung<br>Krong Kracheh | 100101 | 1       | Chhloung*             |      | 6,931      |
|            |                           | 100208 | 2       | Krakor*               |      | 3,905      |
|            |                           | 100209 | 3       | Kracheh*              |      | 8,852      |
|            |                           | 100210 | 4       | Ou Ruessei*           |      | 11,615     |
|            |                           | 100211 | 5       | Roka Kandal*          |      | 4,661      |
| Phnom Penh | Chamkar Mon               |        |         | Province Sub Total    |      | 35,964     |
|            |                           | 120101 | 1       | Tonle Basak*          |      | 30,234     |
|            |                           | 120102 | 2       | Boeng Keng Kang Muoy* |      | 12,440     |
|            |                           | 120103 | 3       | Boeng Keng Kang Pir*  |      | 11,202     |
|            |                           | 120104 | 4       | Boeng Keng Kang Bei*  |      | 22,200     |
|            |                           | 120105 | 5       | Oulampik*             |      | 9,686      |
|            |                           | 120106 | 6       | Tuol Svay Prey Muoy*  |      | 13,621     |
|            |                           | 120107 | 7       | Tuol Svay Prey Pir*   |      | 10,717     |
|            |                           | 120108 | 8       | Tumnob Tuek*          |      | 18,169     |
|            |                           | 120109 | 9       | Tuol Tumpung Pir*     |      | 10,731     |
|            |                           | 120110 | 10      | Tuol Tumpung Muoy*    |      | 12,375     |
|            |                           | 120111 | 11      | Boeng Trabaek*        |      | 8,652      |
|            |                           | 120112 | 12      | Phsar Daeum Thkov*    |      | 21,977     |
| Daun Penh  |                           | 120201 | 13      | Phsar Thmei Muoy*     |      | 6,411      |
|            |                           | 120202 | 14      | Phsar Thmei Pir*      |      | 7,387      |
|            |                           | 120203 | 15      | Phsar Thmei Bei*      |      | 10,320     |
|            |                           | 120204 | 16      | Boeng Reang*          |      | 7,210      |
|            |                           | 120205 | 17      | Phsar Kandal Muoy*    |      | 9,427      |
|            |                           | 120206 | 18      | Phsar Kandal Pir*     |      | 7,334      |
|            |                           | 120207 | 19      | Chakto Mukh*          |      | 10,312     |
|            |                           | 120208 | 20      | Chey Chumneah*        |      | 12,372     |



**Table 1 Provisional List of Towns (Urban Communes and Sangkats<sup>1</sup>) in Cambodia based on 2011 Criteria (RC 2011)**

| Provinces | District         | Code   | New No. | Town Name                 | Population |
|-----------|------------------|--------|---------|---------------------------|------------|
|           |                  | 120209 | 21      | Phsar Chas*               | 7,023      |
|           |                  | 120210 | 22      | Srah Chak*                | 39,491     |
|           |                  | 120211 | 23      | Voat Phnum*               | 9,263      |
|           | Prampir Meakkara | 120301 | 24      | Ou Ruessei Muoy*          | 8,133      |
|           |                  | 120302 | 25      | Ou Ruessei Pir*           | 9,518      |
|           |                  | 120303 | 26      | Ou Ruessei Bei*           | 7,673      |
|           |                  | 120304 | 27      | Ou Ruessei Buon*          | 9,418      |
|           |                  | 120305 | 28      | Monourom*                 | 11,227     |
|           |                  | 120306 | 29      | Mittakpheap*              | 10,268     |
|           |                  | 120307 | 30      | Veal Vong*                | 25,489     |
|           |                  | 120308 | 31      | Boeng Proilit*            | 10,169     |
|           | Tuol Kouk        | 120401 | 32      | Phsar Depou Muoy*         | 10,659     |
|           |                  | 120402 | 33      | Phsar Depou Pir*          | 11,008     |
|           |                  | 120403 | 34      | Phsar Depou Bei*          | 8,254      |
|           |                  | 120404 | 35      | Tuek L'ak Muoy*           | 13,493     |
|           |                  | 120405 | 36      | Tuek L'ak Pir*            | 13,122     |
|           |                  | 120406 | 37      | Tuek L'ak Bei*            | 25,869     |
|           |                  | 120407 | 38      | Boeng Kak Muoy*           | 15,147     |
|           |                  | 120408 | 39      | Boeng Kak Pir*            | 29,171     |
|           |                  | 120409 | 40      | Phsar Daeum Kor*          | 14,542     |
|           |                  | 120410 | 41      | Boeng Salang*             | 29,935     |
|           | Dangkao          | 120501 | 42      | Dangkao*                  | 16,302     |
|           |                  | 120507 | 43      | Pong Tuek <sup>£</sup>    | 7,899      |
|           |                  | 120508 | 44      | Prey Veaeang <sup>£</sup> | 5,455      |
|           |                  | 120510 | 45      | Prey Sa <sup>£</sup>      | 8,439      |
|           |                  | 120512 | 46      | Krang Pongro <sup>£</sup> | 3,018      |

**Table 1 Provisional List of Towns (Urban Communes and Sangkats <sup>1</sup>) in Cambodia based on 2011 Criteria (RC 2011)**

| Provinces | District     | Code   | New No. | Town Name                  | Population |
|-----------|--------------|--------|---------|----------------------------|------------|
|           |              | 120515 | 47      | Cheung Aek <sup>£</sup>    | 7,194      |
|           |              | 120517 | 48      | Preaek Kampue <sup>£</sup> | 8,167      |
|           | Mean Chey    | 120601 | 49      | Stueng Mean Chey*          | 88,590     |
|           |              | 120602 | 50      | Boeng Tumpun*              | 57,495     |
|           |              | 120603 | 51      | Preaek Pra*                | 17,856     |
|           |              | 120604 | 52      | Chbar Ampov Muoy*          | 8,848      |
|           |              | 120605 | 53      | Chbar Ampov Pir*           | 24,879     |
|           |              | 120606 | 54      | Chak Angrae Leu*           | 22,223     |
|           |              | 120607 | 55      | Chak Angrae Kraom*         | 26,328     |
|           |              | 120608 | 56      | Nirouth*                   | 20,646     |
|           |              | 120609 | 57      | Kbal Kaoh*                 | 18,537     |
|           |              | 120610 | 58      | Preaek Aeng*               | 15,791     |
|           |              | 120612 | 59      | Veal Sbov*                 | 9,501      |
|           | Ruessei Kaev | 120702 | 60      | Tuol Sangkae*              | 52,568     |
|           |              | 120703 | 61      | Svay Pak*                  | 16,446     |
|           |              | 120704 | 62      | Kiloumaetr Lekh Prammuoy*  | 17,266     |
|           |              | 120706 | 63      | Ruessei Kaev*              | 24,960     |
|           |              | 120708 | 64      | Preaek Lieb*               | 14,814     |
|           |              | 120710 | 65      | Chroury Changva*           | 19,512     |
|           |              | 120711 | 66      | Chrang Chamreh Muoy*       | 9,948      |
|           |              | 120712 | 67      | Chrang Chamreh Pir*        | 14,282     |
|           |              | 120713 | 68      | Bak Kaeng <sup>£</sup>     | 9,153      |
|           |              | 120714 | 69      | Kaoh Dach <sup>£</sup>     | 12,236     |
|           | Saen Sokh    | 120801 | 70      | Phnom Penh Thmei*          | 38,657     |
|           |              | 120802 | 71      | Tuek Thla*                 | 61,595     |
|           |              | 120803 | 72      | Khmuonh*                   | 20,327     |

**Table 1 Provisional List of Towns (Urban Communes and Sangkats<sup>1</sup>) in Cambodia based on 2011 Criteria (RC 2011)**

| Provinces    | District           | Code   | New No. | Town Name                     | Population |
|--------------|--------------------|--------|---------|-------------------------------|------------|
|              |                    | 120805 | 73      | Preaek Pnov*                  | 12,743     |
|              |                    | 120806 | 74      | Samraong <sup>f</sup>         | 7,792      |
|              | Pou Sean Chey      | 120901 | 75      | <i>Chaom Chau*</i>            | 62,652     |
|              |                    | 120902 | 76      | <i>Kakab*</i>                 | 35,149     |
|              |                    | 120903 | 77      | Krang Thnong <sup>f</sup>     | 4,957      |
|              |                    | 120905 | 78      | Samraong Kraom <sup>£</sup>   | 6,193      |
|              |                    | 120907 | 79      | Trapeang Krasang <sup>£</sup> | 12,707     |
|              |                    | 120910 | 80      | <i>Kamboul*</i>               | 8,604      |
|              |                    | 120911 | 81      | <i>Kantaok*</i>               | 12,511     |
|              |                    |        |         | Province Sub Total            | 1,413,889  |
| Preah Vihear | Krong Preah Vihear | 130801 | 1       | Kampong Pranak*               | 10,679     |
|              |                    |        |         | Province Sub Total            | 10,679     |
| Prey Veng    | Peam Ro            | 140706 | 1       | Preaek Khsay Ka*              | 7,012      |
|              |                    | 140707 | 2       | Preaek Khsay Kha*             | 11,519     |
|              | Krong Prey Veng    | 141003 | 3       | Kampong Leav*                 | 14,548     |
|              | Sithor Kandal      | 141207 | 4       | Preaek Changkran <sup>£</sup> | 6,492      |
|              |                    |        |         | Province Sub Total            | 39,571     |
| Pursat       | Kandieng           | 150209 | 1       | Veal*                         | 4,782      |
|              | Krong Pursat       | 150504 | 2       | Phteah Prey*                  | 15,860     |
|              |                    | 150505 | 3       | Prey Nhi*                     | 5,008      |
|              |                    | 150508 | 4       | Sangkat Banteay Dei           | 5,391      |
|              |                    |        |         | Province Sub Total            | 31,041     |
| Ratanak Kiri | Krong Ban Lung     | 160202 | 1       | @Labansiek*                   | 19,317     |
|              |                    |        |         | Province Sub Total            | 19,317     |

**Table 1 Provisional List of Towns (Urban Communes and Sangkats<sup>1</sup>) in Cambodia based on 2011 Criteria (RC 2011)**

| Provinces      | District                | Code   | New No. | Town                         | Name             | Population |
|----------------|-------------------------|--------|---------|------------------------------|------------------|------------|
| Siem Reap      | Puok<br>Krong Siem Reap | 170710 | 1       | Puok <sup>£</sup>            |                  | 13,679     |
|                |                         | 171001 | 2       | Sla Kram*                    |                  | 45,440     |
|                |                         | 171002 | 3       | Svay Dangkum*                |                  | 47,199     |
|                |                         | 171003 | 4       | Kouk Chak*                   |                  | 30,654     |
|                |                         | 171004 | 5       | Sala Kamraeuk*               |                  | 26,252     |
|                |                         | 171006 | 6       | Chreav <sup>£</sup>          |                  | 14,054     |
|                |                         | 171009 | 7       | Siem Reab*                   |                  | 19,117     |
|                |                         | 171010 | 8       | Srangae <sup>£</sup>         |                  | 8,075      |
|                |                         | 171013 | 9       | Sangkat Tuek Vi <sup>£</sup> |                  | 10,591     |
|                |                         |        |         | Province Sub Total           | <b>215,061</b>   |            |
| Preah Sihanouk | Krong Preah Sihanouk    | 180101 | 1       | Sangkat Muoy*                |                  | 20,492     |
|                |                         | 180102 | 2       | Sangkat Pir*                 |                  | 13,041     |
|                |                         | 180103 | 3       | Sangkat Bei*                 |                  | 24,276     |
|                |                         | 180104 | 4       | Sangkat Buon*                |                  | 31,638     |
|                |                         |        |         | Province Sub Total           | <b>89,447</b>    |            |
| Stung Treng    | Krong Stung Treang      | 190401 | 1       | Stueng Traeng*               |                  | 17,022     |
|                |                         |        |         | Province Sub Total           | <b>17,022</b>    |            |
| Svay Rieng     | Krong Svay Rieng        | 200601 | 1       | Svay Rieng*                  |                  | 13,908     |
|                |                         | 200602 | 2       | Prey Chhlak*                 |                  | 3,121      |
|                |                         | 200604 | 3       | Pou Ta Hao <sup>£</sup>      |                  | 1,736      |
|                |                         | 200802 | 4       | Bavet <sup>£</sup>           |                  | 13,528     |
|                |                         |        |         | Province Sub Total           | <b>32,293</b>    |            |
| Takeo          | Krong Daun Kaev         | 210802 | 1       | Roka Knong*                  |                  | 14,456     |
|                |                         |        |         | Province Sub Total           | <b>14,456</b>    |            |
| Otdar Meanchey | Krong Samraong          | 220405 | 1       | Ou Smach <sup>£</sup>        |                  | 9,281      |
|                |                         |        |         | Province Sub Total           | <b>9,281</b>     |            |
|                |                         |        |         | Cambodia                     | <b>2,795,992</b> |            |

**Table 2 Provisional List of All Towns (Urban Communes and Sangkats<sup>2</sup>) in Cambodia according to RC 2011 SDC**

| Provinces               | District                    | Code          | Town                      |                                   | Population    |
|-------------------------|-----------------------------|---------------|---------------------------|-----------------------------------|---------------|
|                         |                             |               | New No.                   | Name                              |               |
| <b>Banteay Meanchey</b> | <b>Mongkol Borei</b>        | <b>010209</b> | 1                         | <b>Ruessei Kraok*</b>             | 22,124        |
|                         |                             | <b>010602</b> | 2                         | <b>Kampong Svay*</b>              | 26,699        |
|                         | <b>Krong Serei Saophaon</b> | <b>010603</b> | 3                         | <b>Kaoh Pong Satv<sup>g</sup></b> | 3,857         |
|                         |                             | <b>010604</b> | 4                         | <b>Mkak<sup>h</sup></b>           | 7,112         |
|                         |                             | <b>010605</b> | 5                         | <b>Ou Ambel*</b>                  | 19,332        |
|                         |                             | <b>010605</b> | 6                         | <b>Phniet<sup>h</sup></b>         | 4,079         |
|                         |                             | <b>010607</b> | 7                         | <b>Preah Ponlea*</b>              | 15,600        |
|                         |                             | <b>010608</b> | 8                         | <b>Tuek Thla<sup>f</sup></b>      | 13,600        |
|                         | <b>Malai</b>                | <b>010902</b> | 9                         | <b>Malai<sup>h</sup></b>          | 8,092         |
|                         | <b>Krong Paoy Paet</b>      | <b>011001</b> | 10                        | <b>Nimit<sup>h</sup></b>          | 18,440        |
|                         |                             | <b>011002</b> | 11                        | <b>Paoy Paet*</b>                 | 53,391        |
|                         |                             | <b>011003</b> | 12                        | <b>Phsar Kandal*</b>              | 36,158        |
|                         |                             |               | <b>Province Sub Total</b> | <b>228,484</b>                    |               |
| <b>Battambang</b>       | <b>Thma Koul</b>            | <b>020201</b> | 1                         | <b>Ta Pung<sup>h</sup></b>        | <b>13,651</b> |
|                         |                             | <b>020202</b> | 2                         | <b>Ta Meun<sup>h</sup></b>        | <b>15,192</b> |
|                         |                             | <b>020208</b> | 3                         | <b>Kouk Khmum<sup>h</sup></b>     | <b>11,477</b> |
|                         | <b>Krong Bat Dambang</b>    | <b>020301</b> | 4                         | <b>Tuol Ta Aek*</b>               | 15,482        |
|                         |                             | <b>020302</b> | 5                         | <b>Preaek Preah Sdach*</b>        | 15,024        |
|                         |                             | <b>020303</b> | 6                         | <b>Rotanak*</b>                   | 16,123        |
|                         |                             | <b>020304</b> | 7                         | <b>Chamkar Samraong*</b>          | 17,927        |
|                         |                             | <b>020305</b> | 8                         | <b>Sla Kaet*</b>                  | 7,949         |
|                         |                             | <b>020306</b> | 9                         | <b>Kdol Doun Teav*</b>            | 8,442         |
|                         |                             | <b>020307</b> | 10                        | <b>Ou Mal<sup>h</sup></b>         | 10,104        |
|                         |                             | <b>020308</b> | 11                        | <b>Voat Kor<sup>h</sup></b>       | 16,044        |

<sup>2</sup> Note: The commune name with (\*) indicates that commune satisfied the criteria of 2004 and 2011

The commune name with (<sup>h</sup>) indicates that commune satisfied the criteria of 2004 and not of 2011, but re-included based on the field visit/ recommendations of provincial directors

The commune name with (<sup>g</sup>) indicates that commune satisfied the criteria of 2011 only

The commune name with (<sup>f</sup>) indicates that commune is covered by the Sub-Decree (SDC Town)

The commune name with ( ) indicates that commune is recommended by the provincial director based on local knowledge

**Table 2 Provisional List of All Towns (Urban Communes and Sangkats<sup>2</sup>) in Cambodia according to RC 2011 SDC**

| Provinces              | District                     | Code          | New No. | Town Name                   | Population     |
|------------------------|------------------------------|---------------|---------|-----------------------------|----------------|
|                        |                              | <b>020309</b> | 12      | <b>Ou Char*</b>             | 16,027         |
|                        |                              | <b>020310</b> | 13      | <b>Svay Pao*</b>            | 21,201         |
|                        | <b>Aek Phnom</b>             | 020502        | 14      | Samraong Knong <sup>£</sup> | 11,085         |
|                        | <b>Sangkae</b>               | 020801        | 15      | Anlong Vil <sup>¤</sup>     | 16,749         |
|                        |                              | <b>020802</b> | 16      | <b>Norea*</b>               | 5,609          |
|                        | <b>Sampov Lun</b>            | <b>021004</b> | 17      | <b>Santepheap</b>           | 10,595         |
|                        |                              |               |         | <b>Province Sub Total</b>   | <b>228,681</b> |
| <b>Kampong Cham</b>    | <b>Batheay</b>               | 030106        | 1       | <b>Ph'av</b>                | <b>7,386</b>   |
|                        | <b>Chamkar Leu</b>           | <b>030205</b> | 2       | <b>Speu</b>                 | 13,150         |
|                        |                              | <b>030206</b> | 3       | <b>Svay Teab</b>            | 22,600         |
|                        | <b>Cheung Prey</b>           | 030308        | 4       | <b>Soutip<sup>¤</sup></b>   | <b>13,620</b>  |
|                        | <b>Krong Kampong Cham</b>    | <b>030501</b> | 5       | <b>Boeng Kok*</b>           | 8,990          |
|                        |                              | <b>030502</b> | 6       | <b>Kampong Cham*</b>        | 8,878          |
|                        |                              | <b>030503</b> | 7       | <b>Sambuor Meas*</b>        | 13,454         |
|                        |                              | <b>030504</b> | 8       | <b>Veal Vong*</b>           | 15,978         |
|                        | <b>Kampong Siem</b>          | 030601        | 9       | Ampil <sup>£</sup>          | 14,939         |
|                        | <b>Kang Meas</b>             | <b>030704</b> | 10      | <b>Peam Chi Kang</b>        | 6,770          |
|                        | <b>Memot</b>                 | <b>031005</b> | 11      | <b>Dar</b>                  | 20,733         |
|                        |                              | <b>031008</b> | 12      | <b>Memot</b>                | 16,261         |
|                        | <b>Prey Chhor</b>            | <b>031303</b> | 13      | Chrey Vien <sup>¤</sup>     | 14,982         |
|                        | <b>Srei Santhor</b>          | <b>031409</b> | 14      | <b>Preak Pou</b>            | 12,569         |
|                        | <b>Tboung Khmum</b>          | <b>031608</b> | 15      | Chop <sup>¤</sup>           | 19,273         |
|                        | <b>Krong Suong</b>           | <b>031701</b> | 16      | <b>Suong*</b>               | 23,067         |
|                        |                              | <b>031701</b> | 17      | <b>Vihear Luong*</b>        | 12,829         |
|                        |                              |               |         | <b>Province Sub Total</b>   | <b>245,479</b> |
| <b>Kampong Chhnang</b> | <b>Krong Kampong Chhnang</b> | <b>040301</b> | 1       | <b>Phsar Chhnang*</b>       | 20,226         |
|                        |                              | <b>040302</b> | 2       | <b>Kampong Chhnang*</b>     | 10,236         |

**Table 2 Provisional List of All Towns (Urban Communes and Sangkats<sup>2</sup>) in Cambodia according to RC 2011 SDC**

| Provinces    | District        | Code   | New No. | Town Name                              | Population    |
|--------------|-----------------|--------|---------|--|---------------|
| Kampong Speu | Krong Chbar Mon | 040303 | 3       | B'er*                                  | 6,543         |
|              |                 | 040304 | 4       | Khsam*                                 | 6,125         |
|              |                 |        |         |  | <b>43,130</b> |
|              |                 |        |         | <b>Province Sub Total</b>              | <b>8,700</b>  |
|              |                 |        |         | Chbar Mon <sup>¥</sup>                 | <b>7,138</b>  |
|              |                 |        |         | Kandaol Dom <sup>¥</sup>               | 16,284        |
|              |                 |        |         | Roka Thum*                             | 6,687         |
|              |                 |        |         | Sopoar Tep*                            | 8,041         |
|              |                 |        |         | Svay Kravan <sup>¥</sup>               | 7,655         |
|              |                 |        |         | Veang Chas*                            | 17,356        |
| Kampong Thom | Baray           | 050511 | 6       | Veang Chas*                            | 7,655         |
|              |                 | 050713 | 7       | Trapeang Kong <sup>£</sup>             | 17,356        |
|              |                 |        |         | <b>Province Sub Total</b>              | <b>71,861</b> |
|              |                 |        |         | Sou Young                              | <b>7,315</b>  |
|              |                 |        |         | Damrei Choan Khla*                     | 6,626         |
|              |                 |        |         | Kampong Thum*                          | 3,473         |
|              |                 |        |         | Kampong Roteh*                         | 4,987         |
|              |                 |        |         | Ou Kanthor <sup>¥</sup>                | 4,238         |
|              |                 |        |         | Kampong Krabau*                        | 4,833         |
|              |                 |        |         | Prey Ta Hu*                            | 5,681         |
| Kampot       | Kampong Trach   | 060309 | 8       | Achar Leak*                            | 6,271         |
|              |                 | 060310 | 9       | Srayov <sup>¥</sup>                    | 17,924        |
|              |                 |        |         | <b>Province Sub Total</b>              | <b>61,348</b> |
|              |                 |        |         | Kampong Trach Khang Kaeut <sup>²</sup> | <b>9,455</b>  |
|              |                 |        |         | Chum Kriel <sup>²</sup>                | <b>5,834</b>  |
|              |                 |        |         | Kampong Kraeng <sup>£</sup>            | 6,426         |
|              |                 |        |         | Trapeang Thum <sup>²</sup>             | 2,769         |
|              |                 |        |         | Kampong Kandal*                        | 8,285         |
|              |                 |        |         | Krang Ampil*                           | 4,632         |

**Table 2 Provisional List of All Towns (Urban Communes and Sangkats<sup>2</sup>) in Cambodia according to RC 2011 SDC**

| Provinces     | District             | Code   | New No. | Town Name                            | Population    |
|---------------|----------------------|--------|---------|--------------------------------------|---------------|
|               |                      | 070803 | 7       | <b>Kampong Bay*</b>                  | 6,376         |
|               |                      | 070804 | 8       | Andoung Khmer*                       | 10,923        |
|               |                      | 070805 | 9       | Traeuy Kaoh*                         | 6,151         |
|               |                      |        |         | <b>Province Sub Total</b>            | <b>60,851</b> |
| <b>Kandal</b> | <b>Kandal Stueng</b> | 080102 | 1       | <b>Anlong Romiet*</b>                | 4,250         |
|               |                      | 080103 | 2       | Barku <sup>£</sup>                   | 5,394         |
|               | <b>Kien Svay</b>     | 080203 | 3       | <b>Dei Edth</b>                      | 16,840        |
|               |                      | 080206 | 4       | <b>Kokir*</b>                        | 18,058        |
|               | <b>Khsach Kandal</b> | 080305 | 5       | <b>Kaoh Oknha Tei<sup>£</sup></b>    | 5,023         |
|               |                      | 080306 | 6       | <b>Preah Prasab<sup>£</sup></b>      | 8,450         |
|               |                      | 080308 | 7       | <b>Preaek Luong<sup>£</sup></b>      | 4,922         |
|               | <b>Mukh Kampul</b>   | 080703 | 8       | <b>Preaek Anhchanh<sup>£</sup></b>   | 14,380        |
|               |                      | 080707 | 9       | <b>Roka Kaong Muoy<sup>£</sup></b>   | 8,518         |
|               | <b>Angk Snuol</b>    | 080801 | 10      | <b>Baek Chan*</b>                    | 15,762        |
|               |                      | 080803 | 11      | <b>Chhak Chheu Neang<sup>£</sup></b> | 4,824         |
|               |                      | 080804 | 12      | <b>Damnak Ampil<sup>£</sup></b>      | 6,360         |
|               |                      | 080807 | 13      | <b>Krang Mkak</b>                    | 5,013         |
|               |                      | 080811 | 14      | <b>Peuk<sup>£</sup></b>              | 8,504         |
|               | <b>Popnhea Lueu</b>  | 080903 | 15      | <b>Kampong Luong<sup>£</sup></b>     | 10,694        |
|               |                      | 080910 | 16      | <b>Preaek Ta Teaan<sup>£</sup></b>   | 8,666         |
|               |                      | 080911 | 17      | <b>Phsar Daek<sup>£</sup></b>        | 7,619         |
|               | <b>S 'ang</b>        | 081008 | 18      | <b>Preaek Koy<sup>£</sup></b>        | 14,241        |
|               |                      | 081009 | 19      | <b>Roka Khpos<sup>£</sup></b>        | 12,180        |
|               |                      | 081011 | 20      | <b>Setbou<sup>£</sup></b>            | 9,181         |
|               |                      | 081013 | 21      | <b>Svay Rolum<sup>£</sup></b>        | 18,047        |
|               | <b>Krong Takhmau</b> | 081101 | 22      | <b>Ta Kdol*</b>                      | 4,880         |
|               |                      | 081102 | 23      | <b>Preaek Ruessei*</b>               | 10,329        |



**Table 2 Provisional List of All Towns (Urban Communes and Sangkats<sup>2</sup>) in Cambodia according to RC 2011 SDC**

| Provinces   | District                   | Code                  | New No. | Town Name          | Population     |
|-------------|----------------------------|-----------------------|---------|--------------------|----------------|
| Koh Kong    | Krong Khmerak Phoumin      | 081103                | 24      | Daeum Mien*        | 15,001         |
|             |                            | 081104                | 25      | Ta Khmau*          | 28,359         |
|             |                            | 081105                | 26      | Preaek Hour*       | 8,757          |
|             |                            | 081106                | 27      | Kampong Samnanh*   | 12,815         |
|             |                            |                       |         | Province Sub Total | <b>287,067</b> |
|             |                            |                       |         | Smach Mean Chey*   | 10,581         |
| Kratie      | Mondol Seima<br>Srae Ambel | 090401                | 1       | Dang Tong*         | 12,796         |
|             |                            | 090402                | 2       | Stueng Veaeang*    | 2,580          |
|             |                            | 090403                | 3       | Pak Khlang         | 12,236         |
|             |                            | 090501                | 4       | Srae Ambel*        | 12,676         |
|             |                            | 090606                | 5       | Province Sub Total | <b>50,869</b>  |
|             |                            |                       |         | Chhloung*          | 6,931          |
| Mondul Kiri | Krong Saen Monourom        | 100101                | 1       | Kaoh Trong*        | 1,511          |
|             |                            | 100207                | 2       | Krakor*            | 3,905          |
|             |                            | 100208                | 3       | Kracheh*           | 8,852          |
|             |                            | 100209                | 4       | Ou Ruessei*        | 11,615         |
|             |                            | 100210                | 5       | Roka Kandal*       | 4,661          |
|             |                            | 100211                | 6       | Province Sub Total | <b>37,475</b>  |
| Phnom Penh  | Chamkar Mon                | 110501                | 1       | Monourom*          | 1,469          |
|             |                            | 110502                | 2       | Sokh Dom*          | 2,904          |
|             |                            | 110503                | 3       | Spean Mean Chey*   | 4,859          |
|             |                            | 110504                | 4       | Romonea*           | 3,108          |
|             |                            |                       |         | Province Sub Total | <b>12,340</b>  |
|             |                            |                       |         | Tonle Basak*       | 30,234         |
|             |                            | Boeng Keng Kang Muoy* | 12,440  |                    |                |
|             |                            | Boeng Keng Kang Pir*  | 11,202  |                    |                |
|             |                            | Boeng Keng Kang Bei*  | 22,200  |                    |                |

**Table 2 Provisional List of All Towns (Urban Communes and Sangkats<sup>2</sup>) in Cambodia according to RC 2011 SDC**

| Provinces | District                | Town   |         |                      | Population |
|-----------|-------------------------|--------|---------|----------------------|------------|
|           |                         | Code   | New No. | Name                 |            |
|           |                         | 120105 | 5       | Oulampik*            | 9,686      |
|           |                         | 120106 | 6       | Tuol Svay Prey Muoy* | 13,621     |
|           |                         | 120107 | 7       | Tuol Svay Prey Pir*  | 10,717     |
|           |                         | 120108 | 8       | Tumnob Tuek*         | 18,169     |
|           |                         | 120109 | 9       | Tuol Tumpung Pir*    | 10,731     |
|           |                         | 120110 | 10      | Tuol Tumpung Muoy*   | 12,375     |
|           |                         | 120111 | 11      | Boeng Trabaek*       | 8,652      |
|           |                         | 120112 | 12      | Phsar Daeum Thkov*   | 21,977     |
|           |                         | 120201 | 13      | Phsar Thmei Muoy*    | 6,411      |
|           |                         | 120202 | 14      | Phsar Thmei Pir*     | 7,387      |
|           |                         | 120203 | 15      | Phsar Thmei Bei*     | 10,320     |
|           |                         | 120204 | 16      | Boeng Reang*         | 7,210      |
|           |                         | 120205 | 17      | Phsar Kandal Muoy*   | 9,427      |
|           |                         | 120206 | 18      | Phsar Kandal Pir*    | 7,334      |
|           |                         | 120207 | 19      | Chakto Mukh*         | 10,312     |
|           |                         | 120208 | 20      | Chey Chumneah*       | 12,372     |
|           |                         | 120209 | 21      | Phsar Chas*          | 7,023      |
|           |                         | 120210 | 22      | Srah Chak*           | 39,491     |
|           |                         | 120211 | 23      | Voat Phnum*          | 9,263      |
|           |                         | 120301 | 24      | Ou Ruessei Muoy*     | 8,133      |
|           |                         | 120302 | 25      | Ou Ruessei Pir*      | 9,518      |
|           |                         | 120303 | 26      | Ou Ruessei Bei*      | 7,673      |
|           |                         | 120304 | 27      | Ou Ruessei Buon*     | 9,418      |
|           |                         | 120305 | 28      | Monourom*            | 11,227     |
|           |                         | 120306 | 29      | Mittakpheap*         | 10,268     |
|           |                         | 120307 | 30      | Veal Vong*           | 25,489     |
|           |                         | 120308 | 31      | Boeng Prolit*        | 10,169     |
|           | <b>Daun Penh</b>        |        |         |                      |            |
|           | <b>Prampir Meakkara</b> |        |         |                      |            |

**Table 2 Provisional List of All Towns (Urban Communes and Sangkats<sup>2</sup>) in Cambodia according to RC 2011 SDC**

| Provinces | District | Town   |         |                             | Population |
|-----------|----------|--------|---------|-----------------------------|------------|
|           |          | Code   | New No. | Name                        |            |
| Tuol Kouk |          | 120401 | 32      | Phsar Depou Muoy*           | 10,659     |
|           |          | 120402 | 33      | Phsar Depou Pir*            | 11,008     |
|           |          | 120403 | 34      | Phsar Depou Bei*            | 8,254      |
|           |          | 120404 | 35      | Tuek L'ak Muoy*             | 13,493     |
|           |          | 120405 | 36      | Tuek L'ak Pir*              | 13,122     |
|           |          | 120406 | 37      | Tuek L'ak Bei*              | 25,869     |
|           |          | 120407 | 38      | Boeng Kak Muoy*             | 15,147     |
|           |          | 120408 | 39      | Boeng Kak Pir*              | 29,171     |
|           |          | 120409 | 40      | Phsar Daeum Kor*            | 14,542     |
|           |          | 120410 | 41      | Boeng Salang*               | 29,935     |
| Dangkao   |          | 120501 | 42      | Dangkao*                    | 16,302     |
|           |          | 120507 | 43      | Pong Tuek <sup>£</sup>      | 7,899      |
|           |          | 120508 | 44      | Prey Veaeng <sup>£</sup>    | 5,455      |
|           |          | 120510 | 45      | Prey Sa <sup>£</sup>        | 8,439      |
|           |          | 120512 | 46      | Krang Pongro <sup>£</sup>   | 3,018      |
|           |          | 120513 | 47      | Prateah Lang <sup>¥</sup>   | 4,557      |
|           |          | 120514 | 48      | Sak Sampov <sup>¥</sup>     | 2,588      |
|           |          | 120515 | 49      | Cheung Aek <sup>¥</sup>     | 7,194      |
|           |          | 120516 | 50      | Kong Noy <sup>¥</sup>       | 1,689      |
|           |          | 120517 | 51      | Preaek Kampues <sup>£</sup> | 8,167      |
| Mean Chey |          | 120518 | 52      | Roluos <sup>¥</sup>         | 2,878      |
|           |          | 120519 | 53      | Spean Thma <sup>¥</sup>     | 2,904      |
|           |          | 120520 | 54      | Tien <sup>¥</sup>           | 2,197      |
|           |          | 120601 | 55      | Stueng Mean Chey*           | 88,590     |
|           |          | 120602 | 56      | Boeng Tumpun*               | 57,495     |
|           |          | 120603 | 57      | Preaek Pra*                 | 17,856     |
|           |          | 120604 | 58      | Chbar Ampov Muoy*           | 8,848      |

**Table 2 Provisional List of All Towns (Urban Communes and Sangkats<sup>2</sup>) in Cambodia according to RC 2011 SDC**

| Provinces | District      | Town Code | Population |         | Name                          |
|-----------|---------------|-----------|------------|---------|-------------------------------|
|           |               |           | Population | New No. |                               |
|           |               | 120605    | 59         |         | Chbar Ampov Pir*              |
|           |               | 120606    | 60         |         | Chak Angrae Leu*              |
|           |               | 120607    | 61         |         | Chak Angrae Kraom*            |
|           |               | 120608    | 62         |         | Nirouth*                      |
|           |               | 120609    | 63         |         | Kbal Kaoh*                    |
|           |               | 120610    | 64         |         | Preaek Aeng*                  |
|           |               | 120611    | 65         |         | Preaek Thmei <sup>£</sup>     |
|           |               | 120612    | 66         |         | Veal Sbov*                    |
|           |               | 120702    | 67         |         | Tuol Sangkae*                 |
|           |               | 120703    | 68         |         | Svay Pak*                     |
|           |               | 120704    | 69         |         | Kiloumaetr Lekh Prammuoy*     |
|           |               | 120706    | 70         |         | Ruessei Kaev*                 |
|           |               | 120708    | 71         |         | Preaek Lieb*                  |
|           |               | 120709    | 72         |         | Preaek Ta Sek*                |
|           |               | 120710    | 73         |         | Chroury Changva*              |
|           |               | 120711    | 74         |         | Chrang Chamreh Muoy*          |
|           |               | 120712    | 75         |         | Chrang Chamreh Pir*           |
|           |               | 120713    | 76         |         | Bak Kaeng <sup>£</sup>        |
|           |               | 120714    | 77         |         | Kaoh Dach <sup>£</sup>        |
|           |               | 120801    | 78         |         | Phnom Penh Thmei*             |
|           |               | 120802    | 79         |         | Tuek Thla*                    |
|           |               | 120803    | 80         |         | Khmuonh*                      |
|           |               | 120804    | 81         |         | Ponhea Pon <sup>¥</sup>       |
|           |               | 120805    | 82         |         | Preaek Pnov*                  |
|           |               | 120806    | 83         |         | Samraong <sup>£</sup>         |
|           |               | 120902    | 84         |         | Trapeang Krasang <sup>£</sup> |
|           |               | 120903    | 85         |         | Kouk Roka <sup>¥</sup>        |
|           | Ruessei Kaev  |           |            |         |                               |
|           | Saensokh      |           |            |         |                               |
|           | Pou Saen Chey |           |            |         |                               |

**Table 2. Provisional List of All Towns (Urban Communes and Sangkats<sup>2</sup>) in Cambodia according to RC 2011 SDC**

| Provinces    | District           | Town Code | Population |         | Name                          |                  |
|--------------|--------------------|-----------|------------|---------|-------------------------------|------------------|
|              |                    |           |            | New No. |                               |                  |
|              |                    | 120904    | 86         |         | Phleung Chheh Roteh*          | 5,284            |
|              |                    | 120905    | 87         |         | Chaom Chau*                   | 62,652           |
|              |                    | 120906    | 88         |         | Kakab*                        | 35,149           |
|              |                    | 120909    | 89         |         | Samraong Kraom <sup>£</sup>   | 6,193            |
|              |                    | 120911    | 90         |         | Krang Thnong <sup>£</sup>     | 4,957            |
|              |                    | 120921    | 91         |         | Boeng Thum*                   | 7,312            |
|              |                    | 120922    | 92         |         | Kamboul*                      | 8,604            |
|              |                    | 120923    | 93         |         | Kantaok*                      | 12,511           |
|              |                    | 120924    | 94         |         | Ovlaok*                       | 3,746            |
|              |                    | 120925    | 95         |         | Ponsang*                      | 9,192            |
|              |                    | 120926    | 96         |         | Snaor*                        | 5,297            |
|              |                    |           |            |         | <b>Province Sub Total</b>     | <b>1,501,725</b> |
| Preah Vihear | Krong Preah Vihear | 130801    | 1          |         | Kampong Pranak*               | 10,679           |
|              |                    | 130802    | 2          |         | Pal Hal*                      | 10,500           |
|              |                    |           |            |         | <b>Province Sub Total</b>     | <b>21,179</b>    |
| Prey Veng    | Peam Ro            | 140706    | 1          |         | Preaek Khsay Ka*              | 7,012            |
|              |                    | 140707    | 2          |         | Preaek Khsay Kha*             | 11,519           |
|              | Krong Prey Veng    | 141001    | 3          |         | Baray*                        | 4,389            |
|              |                    | 141002    | 4          |         | Cheung Tuek*                  | 4,953            |
|              |                    | 141003    | 5          |         | Kampong Leav*                 | 14,548           |
|              | Sithor Kandal      | 141207    | 6          |         | Preaek Changkran <sup>£</sup> | 6,492            |
|              |                    |           |            |         | <b>Province Sub Total</b>     | <b>48,913</b>    |
| Pursat       | Kandieng           | 150209    | 1          |         | Veal*                         | 4,782            |
|              | Krong Pursat       | 150501    | 2          |         | Chamraeun Phal*               | 6,392            |
|              |                    | 150503    | 3          |         | Lolok Sa*                     | 8,875            |
|              |                    | 150504    | 4          |         | Phateah Prey*                 | 15,860           |
|              |                    | 150505    | 5          |         | Prey Nhi*                     | 5,008            |

**Table 2 Provisional List of All Towns (Urban Communes and Sangkats<sup>2</sup>) in Cambodia according to RC 2011 SDC**

| Provinces           | District               | Code   | New No. | Town Name                              | Population     |
|---------------------|------------------------|--------|---------|--|----------------|
|                     |                        | 150506 | 6       | Roleab <sup>¥</sup>                    | 13,210         |
|                     |                        | 150507 | 7       | Svay At <sup>¥</sup>                   | 4,110          |
|                     |                        | 150508 | 8       | Sangkat Banteay Dei <sup>¥</sup>       | 5,391          |
|                     |                        |        |         | <b>Province Sub Total</b>              | <b>63,628</b>  |
| <b>Ratanak Kiri</b> | <b>Krong Ban Lung</b>  | 160201 | 1       | Kachanh <sup>¥</sup>                   | <b>6,996</b>   |
|                     |                        | 160202 | 2       | Labanstek <sup>*</sup>                 | 13,119         |
|                     |                        | 160203 | 3       | Yeak Laom <sup>¥</sup>                 | 2,669          |
|                     |                        | 160204 | 4       | Boeung Kansaeng <sup>*</sup>           | 6,198          |
|                     |                        |        |         | <b>Province Sub Total</b>              | <b>28,982</b>  |
| <b>Siemreap</b>     | <b>Kralanh</b>         | 170602 | 1       | <b>Kampong Thkov<sup>²</sup></b>       | <b>5,603</b>   |
|                     | <b>Puok</b>            | 170710 | 2       | <b>Puok<sup>£</sup></b>                | 13,679         |
|                     | <b>Krong Siem Reap</b> | 171001 | 3       | <b>Sla Kram<sup>*</sup></b>            | 45,440         |
|                     |                        | 171002 | 4       | <b>Svay Dangkum<sup>*</sup></b>        | 47,199         |
|                     |                        | 171003 | 5       | <b>Kouk Chak<sup>*</sup></b>           | 30,654         |
|                     |                        | 171004 | 6       | <b>Sala Kamraeuk<sup>*</sup></b>       | 26,252         |
|                     |                        | 171005 | 7       | <b>Nokor Thum<sup>¥</sup></b>          | 8,002          |
|                     |                        | 171006 | 8       | <b>Chreav<sup>£</sup></b>              | 14,054         |
|                     |                        | 171007 | 9       | <b>Chong Knies<sup>¥</sup></b>         | 3,427          |
|                     |                        | 171008 | 10      | <b>Sambuor<sup>¥</sup></b>             | 3,687          |
|                     |                        | 171009 | 11      | <b>Siem Reab<sup>*</sup></b>           | 19,117         |
|                     |                        | 171010 | 12      | <b>Srangae<sup>£</sup></b>             | 8,075          |
|                     |                        | 171011 | 13      | <b>Sangkat Ampil<sup>¥</sup></b>       | 6,598          |
|                     |                        | 171012 | 14      | <b>Sangkat Krabei Riel<sup>¥</sup></b> | 7,618          |
|                     |                        | 171013 | 15      | <b>Sangkat Tuek Vil<sup>£</sup></b>    | 10,591         |
|                     | <b>Soutr Nikom</b>     | 171102 | 16      | <b>Dam Daek</b>                        | 14,038         |
|                     |                        |        |         | <b>Province Sub Total</b>              | <b>264,034</b> |

**Table 2 Provisional List of All Towns (Urban Communes and Sangkats<sup>2</sup>) in Cambodia according to RC 2011 SDC**

| Provinces      | District             | Town   | Population | Name                      |                |
|----------------|----------------------|--------|------------|---------------------------|----------------|
|                |                      | Code   | New No.    |                           |                |
| Preah Sihanouk | Krong Preah Sihanouk | 180101 | 1          | Sangkat Muoy*             | 20,492         |
|                |                      | 180102 | 2          | Sangkat Pir*              | 13,041         |
|                |                      | 180103 | 3          | Sangkat Bei*              | 24,276         |
|                |                      | 180104 | 4          | Sangkat Buon*             | 31,638         |
|                |                      | 180105 | 5          | Kaoh Rung*                | 1,837          |
|                |                      | 180214 | 6          | Veal Renh                 | <b>10,228</b>  |
|                |                      | 180301 | 7          | Kampenh                   | 1,905          |
|                |                      | 180302 | 8          | Ou Treh                   | <b>5,332</b>   |
|                |                      | 180303 | 9          | Tumnob Rolok              | <b>13,040</b>  |
|                |                      |        |            | <b>Province Sub Total</b> | <b>121,789</b> |
| Stung Treng    | Krong Stung Treng    | 190401 | 1          | Stueng Traeng*            | 17,022         |
|                |                      | 190402 | 2          | Srah Ruessel*             | 4,385          |
|                |                      | 190403 | 3          | Preah Bat*                | 3,513          |
|                |                      | 190404 | 4          | Sameakki*                 | 6,039          |
|                |                      |        |            | <b>Province Sub Total</b> | <b>30,959</b>  |
| Svay Rieng     | Krong Svay Rieng     | 200601 | 1          | Svay Rieng*               | 13,908         |
|                |                      | 200602 | 2          | Prey Chhlak*              | 3,121          |
|                |                      | 200603 | 3          | Koy Trabaek*              | 2,569          |
|                |                      | 200604 | 4          | Pou Ta Hao <sup>£</sup>   | 1,736          |
|                |                      | 200605 | 5          | Sangkat Chek*             | 8,316          |
|                |                      | 200606 | 6          | Sangkat Svay Toea*        | 4,674          |
|                |                      | 200607 | 7          | Sangkat Sangkhoar*        | 6,212          |
|                |                      | 200801 | 8          | Sangkat Bati*             | 5,033          |
|                |                      | 200802 | 9          | Bavet <sup>£</sup>        | 13,528         |
|                |                      | 200803 | 10         | Sangkat Chrak Mtes*       | 9,811          |
|                |                      | 200804 | 11         | Sangkat Prasat*           | 2,216          |
|                |                      | 200805 | 12         | Sangkat Prey Angkunh*     | 6,535          |
|                |                      |        |            | <b>Province Sub Total</b> | <b>77,659</b>  |

**Table 2 Provisional List of All Towns (Urban Communes and Sangkats<sup>2</sup>) in Cambodia according to RC 2011 SDC**

| Provinces      | District        | Code   | New No. | Town Name                   | Population       |
|----------------|-----------------|--------|---------|-----------------------------|------------------|
| Takeo          | Krong Daun Kaev | 210801 | 1       | Baray <sup>*</sup>          | 11,126           |
|                |                 | 210802 | 2       | Roka Knong <sup>*</sup>     | 14,456           |
|                |                 | 210803 | 3       | Roka Krau <sup>*</sup>      | 15,801           |
|                |                 |        |         | <b>Province Sub Total</b>   | <b>41,383</b>    |
| Otdar Meanchey | Krong Samraong  | 220401 | 1       | Bansay Reak <sup>*</sup>    | 5,643            |
|                |                 | 220402 | 2       | Bos Sbov <sup>*</sup>       | 4,562            |
|                |                 | 220403 | 3       | Koun Kriel <sup>*</sup>     | 13,234           |
|                |                 | 220404 | 4       | Samraong <sup>*</sup>       | 18,694           |
|                |                 | 220405 | 5       | Ou Smach <sup>f</sup>       | 9,281            |
|                |                 |        |         | <b>Province Sub Total</b>   | <b>51,414</b>    |
| Kep            | Krong Kaep      | 230201 | 1       | Kaep <sup>*</sup>           | 4,678            |
|                |                 | 230202 | 2       | Prey Thum <sup>*</sup>      | 8,027            |
|                |                 | 230203 | 3       | Sangkat Ou Krasar           | 6,868            |
|                |                 |        |         | <b>Province Sub Total</b>   | <b>19,573</b>    |
| Pailin         | Krong Pailin    | 240101 | 1       | Sangkat Pailin <sup>*</sup> | 15,674           |
|                |                 | 240102 | 2       | Ou Ta Vau <sup>*</sup>      | 10,299           |
|                |                 | 240103 | 3       | Tuol Lvea <sup>*</sup>      | 6,630            |
|                |                 | 240104 | 4       | Bar Yakha <sup>*</sup>      | 3,751            |
|                |                 |        |         | <b>Province Sub Total</b>   | <b>36,354</b>    |
|                |                 |        |         | <b>Cambodia</b>             | <b>3,635,177</b> |



**Table 3 Changes in the Urban Population Estimates due to Reclassification-Cambodia and Provinces**

| Cambodia/ Provinces | Total Population (2008 Census) | Urban Population According to |                                   | Percentage increase (+) or decrease (-) in urban population of 2008 Census in 2011 Classification | Percentage of Urban Population to total Population |                                     |
|---------------------|--------------------------------|-------------------------------|-----------------------------------|---|--|-------------------------------------|
|                     |                                | 2008 Census (RC 2004 SDC)     | 2011 Classification (RC 2011 SDC) |   | 2008 Census (RC 2004 SDC)                          | 2011 Reclassification (RC 2011 SDC) |
| Banteay Meanchey    | 677,872                        | 181,396                       | 228,484                           | 47,088  | 26.76  | 33.71                               |
| Battambang          | 1,025,174                      | 180,853                       | 228,681                           | 47,828  | 17.64  | 22.31                               |
| Kampong Cham        | 1,679,992                      | 118,242                       | 245,479                           | 127,237   | 7.04   | 14.61                               |
| Kampong Chhnang     | 472,341                        | 43,130                        | 43,130                            | -   | 9.13   | 9.13                                |
| Kampong Speu        | 716,944                        | 54,505                        | 71,861                            | 17,356  | 7.60   | 10.02                               |
| Kampong Thom        | 631,409                        | 31,871                        | 61,348                            | 29,477  | 5.05   | 9.72                                |
| Kampot              | 585,850                        | 48,274                        | 60,851                            | 12,577  | 8.24   | 10.39                               |
| Kandal              | <b>922,854@</b>                | 118,211                       | 287,067                           | 168,856   | 12.81  | 31.11                               |
| Koh Kong            | 117,481                        | 36,053                        | 50,869                            | 14,816  | 30.69  | 43.30                               |
| Kratie              | 319,217                        | 35,964                        | 37,475                            | 1,511   | 11.27  | 11.74                               |
| Mondul Kiri         | 61,107                         | 4,859                         | 12,340                            | 7,481   | 7.95   | 20.19                               |
| Phnom Penh          | 1,670,041@                     | 1,320,679                     | 1,501,725                         | 181,046   | 79.08  | 89.58                               |

Note: @ Twenty communes/sangkats (population 342,426) of Kandal province transferred to Phnom Penh Municipality after the 2008 Census

**Table 3. Changes in the Urban Population Estimates due to Reclassification-Cambodia and Provinces**

| Cambodia/ Provinces | Total Population (2008 Census) | Urban Population According to |                                   | Percentage increase (+) or decrease (-) in urban population of 2008 Census in 2011 Classification | Percentage of Urban Population to total Population |                                     |
|---------------------|--------------------------------|-------------------------------|-----------------------------------|---|--|-------------------------------------|
|                     |                                | 2008 Census (RC 2004 SDC)     | 2011 Classification (RC 2011 SDC) |   | 2008 Census (RC 2004 SDC)                          | 2011 Reclassification (RC 2011 SDC) |
| Preah Vihear        | 171,139                        | 10,679                        | 21,179                            | 10,500  | 6.24   | 12.38                               |
| Prey Veng           | 947,372                        | 33,079                        | 48,913                            | 15,834  | 3.49   | 5.16                                |
| Pursat              | 397,161                        | 25,650                        | 63,628                            | 37,978  | 6.46   | 16.02                               |
| Ratanak Kiri        | 150,466                        | 19,317                        | 28,982                            | 9,665   | 12.84  | 19.26                               |
| Siemreap            | 896,443                        | 174,265                       | 264,034                           | 89,760  | 19.44  | 29.45                               |
| Preah Sihanouk      | 221,396                        | 89,447                        | 121,789                           | 32,342  | 40.40  | 55.01                               |
| Stung Treng         | 111,671                        | 17,022                        | 30,959                            | 13,937  | 15.24  | 27.72                               |
| Svay Rieng          | 482,788                        | 17,029                        | 77,659                            | 60,630  | 3.53   | 16.09                               |
| Takeo               | 844,906                        | 14,456                        | 41,383                            | 26,927  | 1.71   | 4.90                                |
| Otdar Meanchey      | 185,819                        | 18,694                        | 51,414                            | 32,720  | 10.06  | 27.67                               |
| Kep                 | 35,753                         | 4,678                         | 19,573                            | 14,895  | 13.08  | 54.75                               |
| Pailin              | 70,486                         | 15,674                        | 36,354                            | 20,680  | 22.24  | 51.58                               |
| <b>Cambodia</b>     | <b>13,395,682</b>              | <b>2,614,027</b>              | <b>3,635,177</b>                  | <b>1,021,150</b>  | <b>19.51</b>                                       | <b>27.03</b>                        |

**Table 4 Number of Communes/ Sangkats made urban in the 2011 Reclassification (RC 2011 SDC) by Category- Cambodia and Provinces**

| Province         | No. of Towns satisfying RC 2004 and 2008 | No. of Towns satisfying RC 2011 only | No. of Towns recommended by Province Directors | No. of Towns Re-included on the basis of field Visit | No. Towns in Royal Sub-Decree | Total No. of Towns in RC 2011 |
|------------------|--|--------------------------------------|--|--|-------------------------------|-------------------------------|
| Banteay Meanchey | 5  | 1                                    | 1  | 1  | 4                             | 12                            |
| Battambang       | 9  | 1                                    | 1  | 4  | 2                             | 17                            |
| Kampong Cham     | 5  | 1                                    | 7  | 3  | 1                             | 17                            |
| Kampong Chhang   | 4  |                                      |  |  |                               | 4                             |
| Kampong Speu     | 3  | 1                                    |  |  | 3                             | 7                             |
| Kampong Thom     | 6  |                                      | 1  |  | 2                             | 9                             |
| Kampot           | 4  | 1                                    |  | 3  | 1                             | 9                             |
| Kandal           | 9  | 16                                   | 2  |  |                               | 27                            |
| Kohkong          | 3  |                                      | 1  |  | 1                             | 5                             |
| Kratie           | 5  |                                      |  |  | 1                             | 6                             |
| Mondulkiri       | 0  |                                      |  |  | 4                             | 4                             |
| Phnom Penh       | 69                                       | 12                                   |  |  | 15                            | 96                            |
| Preah Vihear     | 1  |                                      |  |  | 1                             | 2                             |
| Prey Veng        | 3  | 1                                    |  |  | 2                             | 6                             |
| Pusat            | 3  |                                      |  |  | 5                             | 8                             |
| Ratanak kiri     | 1  |                                      |  |  | 3                             | 4                             |
| Siem Reap        | 5  | 4                                    | 1  | 1  | 5                             | 16                            |
| Preah Sihanouk   | 4  |                                      | 4  |  | 1                             | 9                             |
| Stung Treng      | 1  |                                      |  |  | 3                             | 4                             |
| Svay Reang       | 2  | 2                                    |  |  | 8                             | 12                            |
| Takeo            | 1  |                                      |  |  | 2                             | 3                             |
| Otdor Meanchey   | 0  | 1                                    |  |  | 4                             | 5                             |
| Kep              | 0  |                                      | 1  |  | 2                             | 3                             |
| Pailin           | 0  |                                      |  |  | 4                             | 4                             |
| <b>Cambodia</b>  | <b>144</b>                               | <b>41</b>                            | <b>19</b>                                      | <b>12</b>  | <b>73</b>                     | <b>289</b>                    |

**Table 5 Differences between Urban and Rural areas in various Indicators derived from 2008 Census on the basis of RC 2004 SDC and RC 2011 SDC**

| Indicator   | RC 2004 SDC (2008 Census) |       |       | RC 2011SDC |       |       |
|---|---------------------------|-------|-------|------------|-------|-------|
|   | Urban                     | Rural | Total | Urban      | Rural | Total |
| Adult Literacy Rate (15+)   | 90.42                     | 73.98 | 1.22  | 91.07      | 73.60 | 1.24  |
| School Enrolment Rate (6 - 14)  | 86.55                     | 79.11 | 1.09  | 91.27      | 79.71 | 1.15  |
| Safe Drinking Water(Pipe Water, Tube Pipe Well, Protected dug Well, rain Water) | 75.75                     | 40.49 | 1.87  | 69.02      | 39.93 | 1.73  |
| Availability of Toilet in premises  | 81.41                     | 23.24 | 3.50  | 80.70      | 29.27 | 2.76  |
| Firewood as cooking fuel  | 34.74                     | 94.32 | 0.37  | 46.21      | 95.01 | 0.49  |



(Unofficial Translation)



KINGDOM OF CAMBODIA  
NATION RELIGION KING  
\*\*\*\*\*

The Royal Government of Cambodia  
No: 18 ANKR.BK

SUB-DECREE  
ON

Number of Councilors of Phnom Penh municipality, Provinces, Municipalities,  
Districts and Khans for the 1<sup>st</sup> Mandate

The Royal Government

- Having seen the Constitution of the Kingdom of Cambodia;
- Having seen the Royal Kram No. 02/NS/94 dated 20 July 1994 promulgating the Law on Establishment and Functioning of the Council of Ministers;
- Having seen the Royal Decree No. NS/RKT/0908/1055 dated 25 September 2008 on the Appointment of the Royal Government of the Kingdom of Cambodia;
- Having seen the Royal Kram No. NS/RKM/0508/017 dated 24 May 2008 promulgating the Law on Administrative Management of Capital, Provinces, Municipalities, Districts and Khans;
- Having seen the Royal Kram No. NS/RKM/0508/018 dated 24 May 2008 promulgating the Law on election of councilors of Capital, Provinces, Municipalities, Districts and Khans;
- Having seen the Royal Kram No. NS/RKM/0196/08 dated 24 January 1996 promulgating the Law on establishment of ministry of interior;
- Base on the request of minister of interior,

DECIDE

Article 1.\_ to be defined number of councilors of each municipality and province for its 1<sup>st</sup> mandate complied with article 18 of Law on Administrative Management of Capital, Provinces, Municipalities, Districts and Khans as follow:

|    |                  |              |               |
|----|------------------|--------------|---------------|
| 01 | Phnom Penh       | Municipality | 21 councilors |
| 02 | Kampong Cham     | Province     | 21 councilors |
| 03 | Kandal           | Province     | 21 councilors |
| 04 | Battambang       | Province     | 19 councilors |
| 05 | Prey Veng        | Province     | 19 councilors |
| 06 | Siem Reap        | Province     | 19 councilors |
| 07 | Takeo            | Province     | 19 councilors |
| 08 | Banteay Meanchey | Province     | 17 councilors |
| 09 | Kampong Speu     | Province     | 17 councilors |
| 10 | Kampong Thom     | Province     | 17 councilors |
| 11 | Kampot           | Province     | 17 councilors |
| 12 | Kampong Chhnang  | Province     | 15 councilors |
| 13 | Svay Rieng       | Province     | 15 councilors |
| 14 | Pursat           | Province     | 15 councilors |
| 15 | Kratie           | Province     | 15 councilors |
| 16 | Preah Sihanouk   | Province     | 15 councilors |
| 17 | Koh Kong         | Province     | 13 councilors |
| 18 | Preah Vihear     | Province     | 13 councilors |
| 19 | Ratanak Kiri     | Province     | 13 councilors |
| 20 | Stung Treng      | Province     | 13 councilors |
| 21 | Otdar Meanchey   | Province     | 13 councilors |
| 22 | Mondul Kiri      | Province     | 9 councilors  |
| 23 | Pallin           | Province     | 9 councilors  |
| 24 | Kep              | Province     | 9 councilors  |

**Article 2.\_** To be defined number of councilors of each district and khan for its 1<sup>st</sup> mandate complied with article 18 of Law on Administrative Management of Capital, Provinces, Municipalities, Districts and Khans as follow:

|           |                                |          |               |
|-----------|--------------------------------|----------|---------------|
| <b>01</b> | <b>Phnom Penh Municipality</b> |          |               |
| 01        | Dangkao                        | Khan     | 19 councilors |
| 02        | Mean Chey                      | Khan     | 19 councilors |
| 03        | Chamkar Mon                    | Khan     | 19 councilors |
| 04        | Tuol Kouk                      | Khan     | 19 councilors |
| 05        | Ruessei Kaev                   | Khan     | 19 councilors |
| 06        | Doun Penh                      | Khan     | 17 councilors |
| 07        | Prampir Meakkakra              | Khan     | 17 councilors |
| 08        | Sen Sok                        | Khan     | 17 councilors |
| <b>02</b> | <b>Kampong Cham Province</b>   |          |               |
| 09        | Tboung Khmum                   | District | 19 councilors |
| 10        | Prey Chhor                     | District | 19 councilors |
| 11        | Memot                          | District | 19 councilors |
| 12        | Chamkar Leu                    | District | 19 councilors |
| 13        | Ponhea Kraek                   | District | 19 councilors |
| 14        | Srei Santhor                   | District | 19 councilors |
| 15        | Stueng Trang                   | District | 19 councilors |
| 16        | Kampong Siem                   | District | 19 councilors |
| 17        | Batheay                        | District | 19 councilors |
| 18        | Kang Meas                      | District | 19 councilors |
| 19        | Krouch Chhmar                  | District | 19 councilors |
| 20        | Cheung Prey                    | District | 17 councilors |
| 21        | Dambae                         | District | 17 councilors |
| 22        | Ou Reang Ov                    | District | 17 councilors |
| 23        | Kaoh Soutin                    | District | 17 councilors |
| 24        | Kampong Cham                   | City     | 15 councilors |
| 25        | Soung                          | City     | 13 councilors |
| <b>03</b> | <b>Kandal Province</b>         |          |               |
| 26        | Kien Svay                      | District | 19 councilors |
| 27        | S'ang                          | District | 19 councilors |
| 28        | Kaoh Thum                      | District | 19 councilors |
| 29        | Khsach Kandal                  | District | 19 councilors |
| 30        | Ponhea Lueu                    | District | 19 councilors |
| 31        | Angk Snuol                     | District | 19 councilors |
| 32        | Kandal Stueng                  | District | 19 councilors |
| 33        | Mukh Kampul                    | District | 17 councilors |
| 34        | Lvea Aem                       | District | 17 councilors |
| 35        | Leuk Daek                      | District | 15 councilors |
| 36        | Ta Khmau                       | City     | 15 councilors |
| <b>04</b> | <b>Battambang Province</b>     |          |               |
| 37        | Thma Koul                      | District | 19 councilors |
| 38        | Moung Ruessei                  | District | 19 councilors |
| 39        | Sangkae                        | District | 19 councilors |
| 40        | Banan                          | District | 17 councilors |
| 41        | Bavel                          | District | 17 councilors |
| 42        | Aek Phnum                      | District | 17 councilors |
| 43        | Battambang                     | City     | 17 councilors |
| 44        | Phnum Proek                    | District | 15 councilors |
| 45        | Kamrieng                       | District | 15 councilors |
| 46        | Rotonak Mondol                 | District | 13 councilors |
| 47        | Samlout                        | District | 13 councilors |
| 48        | Koas Krala                     | District | 13 councilors |
| 49        | Rukh Kiri                      | District | 13 councilors |
| 50        | Sampov Lun                     | District | 11 councilors |
| <b>05</b> | <b>Prey Veng Province</b>      |          |               |
| 51        | Pea Reang                      | District | 19 councilors |
| 52        | Preah Sdach                    | District | 19 councilors |
| 53        | Kampong Trabaek                | District | 19 councilors |
| 54        | Svay Antor                     | District | 19 councilors |

|    |                                  |                  |          |               |
|----|----------------------------------|------------------|----------|---------------|
|    | 55                               | Me Sang          | District | 17 councilors |
|    | 56                               | Ba Phnum         | District | 17 councilors |
|    | 57                               | Sithor Kandal    | District | 17 councilors |
|    | 58                               | Kanhchriech      | District | 17 councilors |
|    | 59                               | Peam Chor        | District | 17 councilors |
|    | 60                               | Peam Ro          | District | 15 councilors |
|    | 61                               | Kamchay Mear     | District | 13 councilors |
|    | 62                               | Kampong Leav     | District | 13 councilors |
|    | 63                               | Prey Veang       | City     | 11 councilors |
| 06 | <b>Siem Reap Province</b>        |                  |          |               |
|    | 64                               | Chi Kraeng       | District | 19 councilors |
|    | 65                               | Puok             | District | 19 councilors |
|    | 66                               | Soutr Nikom      | District | 19 councilors |
|    | 67                               | Prasat Bakong    | District | 17 councilors |
|    | 68                               | Kralanh          | District | 15 councilors |
|    | 69                               | Angkor Chum      | District | 15 councilors |
|    | 70                               | Siem Reab        | City     | 13 councilors |
|    | 71                               | Banteay Srei     | District | 13 councilors |
|    | 72                               | Srei Snam        | District | 13 councilors |
|    | 73                               | Svay Leu         | District | 13 councilors |
|    | 74                               | Varin            | District | 13 councilors |
|    | 75                               | Angkor Thum      | District | 11 councilors |
| 07 | <b>Banteay Meanchey Province</b> |                  |          |               |
|    | 76                               | Mongkol Borei    | District | 19 councilors |
|    | 77                               | Preah Netr Preah | District | 17 councilors |
|    | 78                               | Ou Chrov         | District | 15 councilors |
|    | 79                               | Serei Saophoan   | District | 15 councilors |
|    | 80                               | Phnum Srok       | District | 15 councilors |
|    | 81                               | Svay Chek        | District | 15 councilors |
|    | 82                               | Poy Pait         | City     | 13 councilors |
|    | 83                               | Thma Puok        | District | 13 councilors |
|    | 84                               | Malai            | District | 13 councilors |
| 08 | <b>Takeo Province</b>            |                  |          |               |
|    | 85                               | Bati             | District | 19 councilors |
|    | 86                               | Tram Kak         | District | 19 councilors |
|    | 87                               | Samraong         | District | 19 councilors |
|    | 88                               | Treang           | District | 19 councilors |
|    | 89                               | Kiri Vong        | District | 19 councilors |
|    | 90                               | Prey Kabbas      | District | 19 councilors |
|    | 91                               | Angkor Borei     | District | 15 councilors |
|    | 92                               | Kach Andaet      | District | 15 councilors |
|    | 93                               | Doun Kaev        | City     | 15 councilors |
|    | 94                               | Bourei Cholsar   | District | 13 councilors |
| 09 | <b>Kampong Speu Province</b>     |                  |          |               |
|    | 95                               | Baseath          | District | 19 councilors |
|    | 96                               | Kong Pisei       | District | 19 councilors |
|    | 97                               | Odongk           | District | 19 councilors |
|    | 98                               | Samraong Tong    | District | 19 councilors |
|    | 99                               | Phnum Sruoch     | District | 17 councilors |
|    | 100                              | Thpong           | District | 15 councilors |
|    | 101                              | Chbar Mon        | City     | 15 councilors |
|    | 102                              | Aoral            | District | 13 councilors |
| 10 | <b>Kampong Thom Province</b>     |                  |          |               |
|    | 103                              | Baray            | District | 19 councilors |
|    | 104                              | Stoung           | District | 19 councilors |
|    | 105                              | Kampong Svay     | District | 17 councilors |
|    | 106                              | Santuk           | District | 17 councilors |
|    | 107                              | Prasat Baiangk   | District | 15 councilors |
|    | 108                              | Prasat Sambour   | District | 15 councilors |
|    | 109                              | Sandan           | District | 15 councilors |
|    | 110                              | Stueng Saen      | City     | 15 councilors |

|           |                                 |          |               |
|-----------|---------------------------------|----------|---------------|
| <b>11</b> | <b>Kampong Chhnang Province</b> |          |               |
|           | 111 Rolea B'ler                 | District | 17 councilors |
|           | 112 Kampong Tralach             | District | 17 councilors |
|           | 113 Sameakki Mean Chey          | District | 17 councilors |
|           | 114 Kampong Leaing              | District | 15 councilors |
|           | 115 Baribour                    | District | 15 councilors |
|           | 116 Tuek Phos                   | District | 15 councilors |
|           | 117 Kampong Chhnang             | City     | 13 councilors |
|           | 118 Chol Kiri                   | District | 13 councilors |
| <b>12</b> | <b>Kampot Province</b>          |          |               |
|           | 119 Toeuk Chhu                  | District | 17 councilors |
|           | 120 Kampong Trach               | District | 17 councilors |
|           | 121 Chhuk                       | District | 17 councilors |
|           | 122 Banteay Meas                | District | 17 councilors |
|           | 123 Angkor Chey                 | District | 17 councilors |
|           | 124 Dang Tong                   | District | 15 councilors |
|           | 125 Chum Kiri                   | District | 15 councilors |
|           | 126 Kampot                      | City     | 13 councilors |
| <b>13</b> | <b>Svay Rieng Province</b>      |          |               |
|           | 127 Romeas Haek                 | District | 19 councilors |
|           | 128 Svay Chrum                  | District | 19 councilors |
|           | 129 Kampong Rou                 | District | 15 councilors |
|           | 130 Rumduol                     | District | 15 councilors |
|           | 131 Svay Teab                   | District | 15 councilors |
|           | 132 Svay Rieng                  | City     | 15 councilors |
|           | 133 Chantrea                    | District | 13 councilors |
|           | 134 Bavet                       | City     | 11 councilors |
| <b>14</b> | <b>Pursat Province</b>          |          |               |
|           | 135 Bakan                       | District | 19 councilors |
|           | 136 Krakor                      | District | 17 councilors |
|           | 137 Pursat                      | City     | 15 councilors |
|           | 138 Phnum Kravanh               | District | 15 councilors |
|           | 139 Kandleng                    | District | 15 councilors |
|           | 140 Veal Veaeng                 | District | 7 councilors  |
| <b>15</b> | <b>Koh Kong Province</b>        |          |               |
|           | 141 Khemarak Phumin             | City     | 13 councilors |
|           | 142 Botum Sakor                 | District | 11 councilors |
|           | 143 Srae Ambel                  | District | 11 councilors |
|           | 144 Mondoi Seima                | District | 7 councilors  |
|           | 145 Kiri Sakor                  | District | 7 councilors  |
|           | 146 Kaoh Kong                   | District | 7 councilors  |
|           | 147 Thma Bang                   | District | 7 councilors  |
| <b>16</b> | <b>Kratie Province</b>          |          |               |
|           | 148 Preaek Prasab               | District | 15 councilors |
|           | 149 Chhloung                    | District | 15 councilors |
|           | 150 Sambour                     | District | 15 councilors |
|           | 151 Snuol                       | District | 15 councilors |
|           | 152 Chitr Borie                 | District | 15 councilors |
|           | 153 Kracheh                     | City     | 13 councilors |
| <b>17</b> | <b>Preah Vihear Province</b>    |          |               |
|           | 154 Rovieng                     | District | 13 councilors |
|           | 155 Choam Khsant                | District | 11 councilors |
|           | 156 Kuleaen                     | District | 11 councilors |
|           | 157 Chey Saen                   | District | 11 councilors |
|           | 158 Sangkom Thmei               | District | 11 councilors |
|           | 159 Chhaeb                      | District | 11 councilors |
|           | 160 Preah Vihear                | City     | 11 councilors |
|           | 161 Tbaeng Mean chey            | District | 7 councilors  |
| <b>18</b> | <b>Ratanak Kiri Province</b>    |          |               |
|           | 162 Ban Lung                    | City     | 13 councilors |
|           | 163 Ou Chum                     | District | 11 councilors |
|           | 164 Veun Sai                    | District | 11 councilors |
|           | 165 Bar Kaev                    | District | 11 councilors |



|    |                                |                   |          |               |
|----|--------------------------------|-------------------|----------|---------------|
|    | 166                            | Lumphat           | District | 7 councilors  |
|    | 167                            | Koun Mom          | District | 7 councilors  |
|    | 168                            | Andoung Meas      | District | 7 councilors  |
|    | 169                            | Ou Ya Dav         | District | 7 councilors  |
|    | 170                            | Ta Veang          | District | 7 councilors  |
| 19 | <b>Preah Sihanouk Province</b> |                   |          |               |
|    | 171                            | Prey Nob          | District | 17 councilors |
|    | 172                            | Preah Sihanouk    | City     | 15 councilors |
|    | 173                            | Kampong Seila     | District | 11 councilors |
|    | 174                            | Stueng Hav        | District | 7 councilors  |
| 20 | <b>Stung Treng Province</b>    |                   |          |               |
|    | 175                            | Thala Barivat     | District | 13 councilors |
|    | 176                            | Stueng Traeng     | City     | 13 councilors |
|    | 177                            | Sesan             | District | 11 councilors |
|    | 178                            | Siem Pang         | District | 9 councilors  |
|    | 179                            | Siem Bouk         | District | 7 councilors  |
| 21 | <b>Otdar Meanchey Province</b> |                   |          |               |
|    | 180                            | Samraong          | City     | 15 councilors |
|    | 181                            | Banteay Ampil     | District | 13 councilors |
|    | 182                            | Anlong Veang      | District | 13 councilors |
|    | 183                            | Trapeang Prasat   | District | 13 councilors |
|    | 184                            | Chong Kal         | District | 11 councilors |
| 22 | <b>Mondul Kiri Province</b>    |                   |          |               |
|    | 185                            | Kaev Seima        | District | 11 councilors |
|    | 186                            | Kaoh Nheak        | District | 7 councilors  |
|    | 187                            | Ou Reang          | District | 7 councilors  |
|    | 188                            | Pech Chreada      | District | 7 councilors  |
|    | 189                            | Saen Monourom     | City     | 7 councilors  |
| 23 | <b>Pailin Province</b>         |                   |          |               |
|    | 190                            | Pailin            | City     | 13 councilors |
|    | 191                            | Sala Krau         | District | 13 councilors |
| 24 | <b>Kep Province</b>            |                   |          |               |
|    | 192                            | Damnak Chang'aeur | District | 11 councilors |
|    | 193                            | Kaeb              | City     | 7 councilors  |

**Article 3.\_** The Minister for the Council of Ministers, Minister of Interior, Minister of Economic and Finance, Ministers and Secretaries of State of all ministries, and relevant institutions shall implementation of this sub-decree upon the signature.

Phnom Penh, 12 January 2008

(Signature and stamp)

Prime Minister

Samdech Akka Moha Sena Padei Techo Hun Sen

**Places received:**

- Ministry of the Royal Palace
- General Secretariat of the Senate
- General Secretariat of the National Assembly
- General Secretary of the Royal Government
- The National Election Committee
- Cabinet of the Prime Minister
- As per Article 3
- Royal duty
- Archives-chronologies





